

LOC/DME I-BYL <b>108.3</b> Chan <b>20</b>	APP CRS <b>200°</b>	Rwy Ldg TDZE <b>1178</b> Apt Elev <b>1178</b>
---	------------------------	---

# LOC RWY 20

WILLIAMSBURG-WHITLEY COUNTY (BYL)

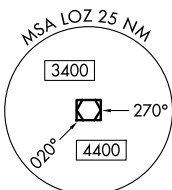
DME required.

**⚠** Rwy 20 helicopter visibility reduction below  $\frac{3}{4}$  SM NA. VDP NA when using London altimeter setting. When local altimeter setting not received, use London altimeter setting and increase all MDAs 60 feet and S-20 Cats C/D visibility  $\frac{1}{8}$  SM.

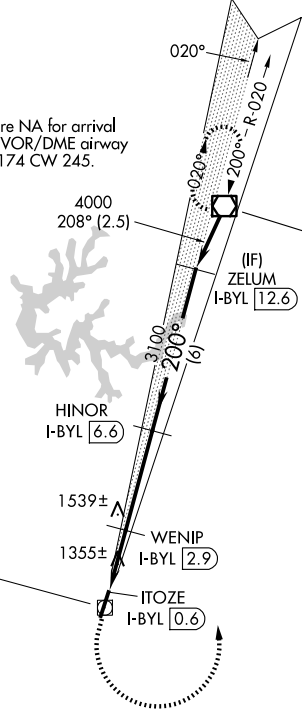
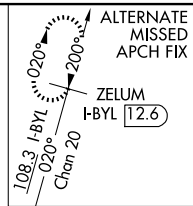
**⚠** -16°C

**MISSED APPROACH:** Climb to 1800 then climbing left turn to 4000 direct LOZ VOR/DME and hold.

AWOS-3 <b>119.575</b>	INDIANAPOLIS CENTER <b>124.625 371.925</b>	UNICOM <b>122.7 (CTAF)</b>
--------------------------	---	-------------------------------

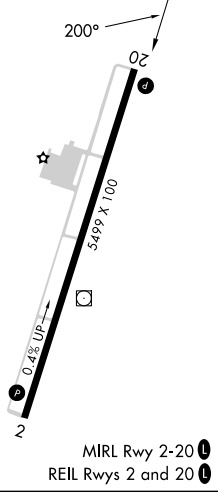


Procedure NA for arrival on LOZ VOR/DME airway radials 174 CW 245.



**LOCALIZER 108.3**  
I-BYL  
Chan 20  
LOC offset 2.88°

ELEV 1178	TDZE 1178
-----------	-----------



1800	4000	LOZ	VGSI and descent angles not coincident (VGSI Angle 3.17/TCH 30).	
		WENIP I-BYL 2.9	HINOR I-BYL 6.6	ZELUM I-BYL 12.6
		ITOZE I-BYL 0.6	3100	4000
		1940	$\angle 2.95^\circ$ TCH 45	
		1 NM	1.3 NM	3.7 NM
CATEGORY	A	B	C	D
S-20	1740-1	562 (600-1)	1740- $1\frac{5}{8}$	562 (600- $1\frac{5}{8}$ )
CIRCLING	1760-1	1860-1	2240-3	2260-3
	582 (600-1)	682 (700-1)	1062 (1100-3)	1082 (1100-3)

SE-1, 14 MAY 2026 to 11 JUN 2026

SE-1, 14 MAY 2026 to 11 JUN 2026