

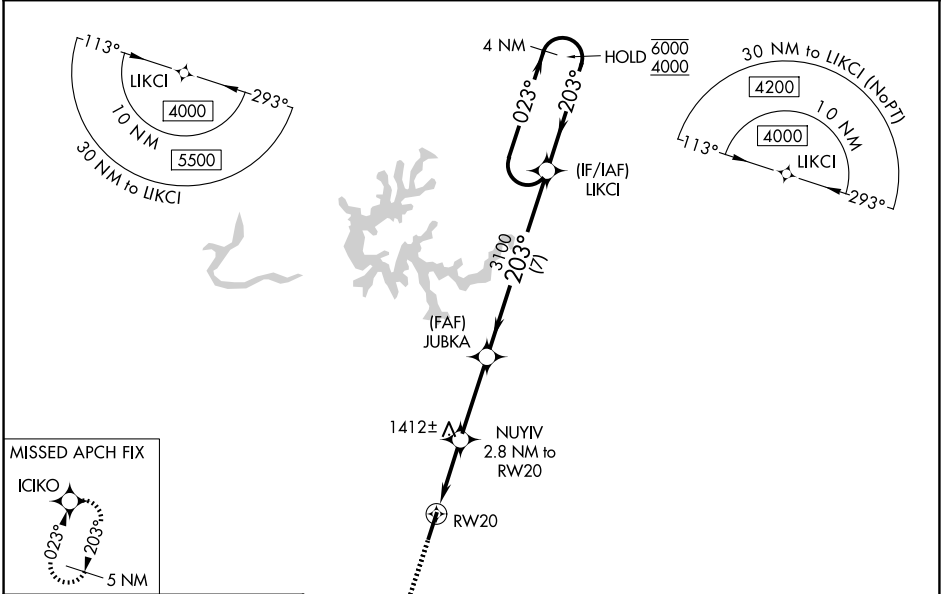
WAAS CH 70403 W20A	APP CRS 203°	Rwy Ldg TDZE 1178 Apt Elev 1178
--	------------------------	--

RNAV (GPS) RWY 20

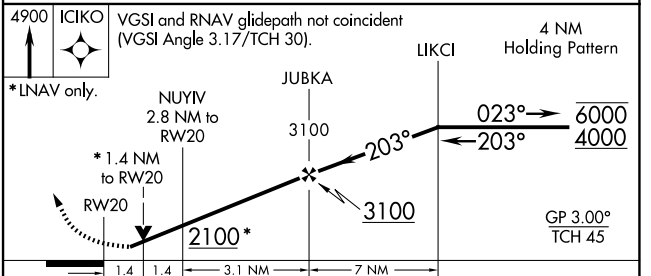
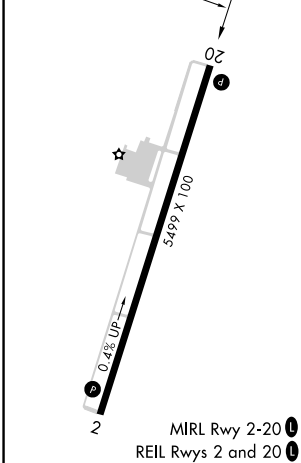
WILLIAMSBURG-WHITLEY COUNTY (BYL)

RNP APCH.	MISSED APPROACH: Climb to 4900 direct ICIKO and hold, continue climb-in-hold 4900.
<p>▼ Rwy 20 helicopter visibility reduction below ¼ SM NA. For uncompensated Baro-VNAV systems, LNAV/VNAV NA below -17°C or above 54°C.</p> <p>⚠ -16°C</p>	

AWOS-3 119.575	INDIANAPOLIS CENTER 124.625 371.925	UNICOM 122.7 (CTAF) 0
--------------------------	---	---------------------------------



ELEV 1178	TDZE 1178
-----------	-----------



CATEGORY	A	B	C	D
LPV DA		1651-1 $\frac{3}{8}$	473 (500-1 $\frac{3}{8}$)	
LNAV/VNAV DA		1670-1 $\frac{1}{8}$	492 (500-1 $\frac{1}{8}$)	
LNAV MDA	1680-1	502 (600-1)	1680-1 $\frac{3}{8}$	502 (600-1 $\frac{3}{8}$)
CIRCLING	1760-1 582 (600-1)	1860-1 682 (700-1)	2240-3 1062 (1100-3)	2260-3 1082 (1100-3)

SE-1, 14 MAY 2026 to 11 JUN 2026

SE-1, 14 MAY 2026 to 11 JUN 2026