

WAAS CH <b>50529</b> <b>W30A</b>	APP CRS <b>302°</b>	Rwy Ldg TDZE Apt Elev	<b>3900</b> <b>2247</b> <b>2264</b>
--	------------------------	-----------------------------	---

# RNAV (GPS) RWY 30

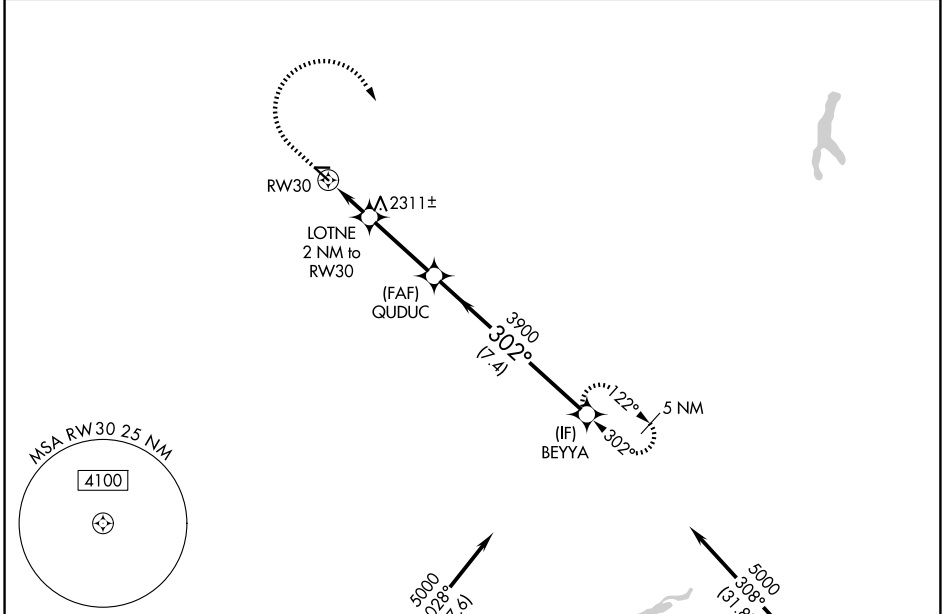
SHER-WOOD (PWD)

RNP APCH-GPS.

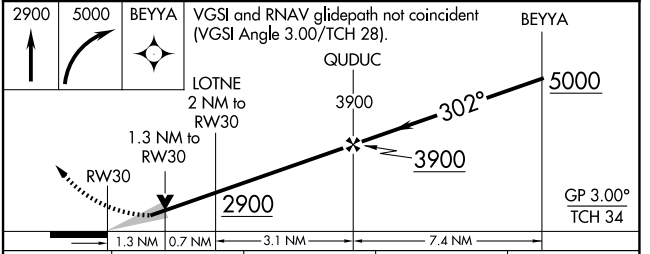
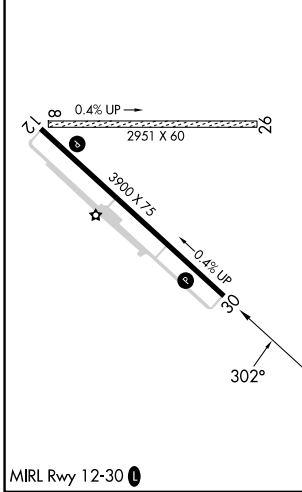
**⚠** Circling Rwy 8, 26 NA at night. For uncompensated Baro-VNAV systems, LNAV/VNAV NA below -19°C or above 54°C. When local altimeter setting not received, use Williston altimeter setting.

MISSED APPROACH: Climb to 2900 then climbing right turn to 5000 direct BEYYA and hold.

AWOS-3PT <b>135.025</b>	SALT LAKE CENTER <b>126.85 305.2</b>	UNICOM <b>122.8 (CTAF) 0</b>
----------------------------	---	---------------------------------



ELEV 2264	TDZE 2247
-----------	-----------



CATEGORY	A	B	C	D
LPV DA		2562-3/4	315 (300-3/4)	
LNAV/VNAV DA		2612-1	365 (400-1)	
LNAV MDA	2680-1	433 (500-1)	2680-1 1/4	433 (500-1 1/4)
CIRCLING	2780-1	516 (600-1)	2880-1 3/4 616 (700-1 3/4)	3100-2 3/4 836 (900-2 3/4)

NW-1, 14 MAY 2026 to 11 JUN 2026

NW-1, 14 MAY 2026 to 11 JUN 2026