

APP CRS 224°	Rwy Ldg TDZE Apt Elev	NA NA 1154
------------------------	-----------------------------	---------------------------------------

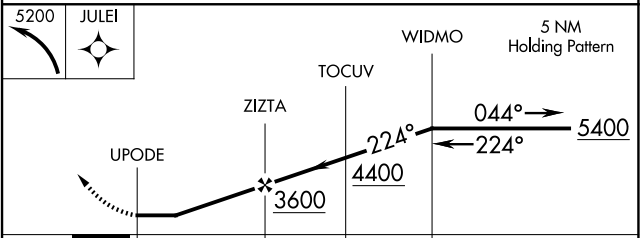
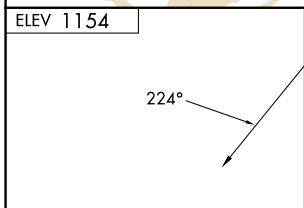
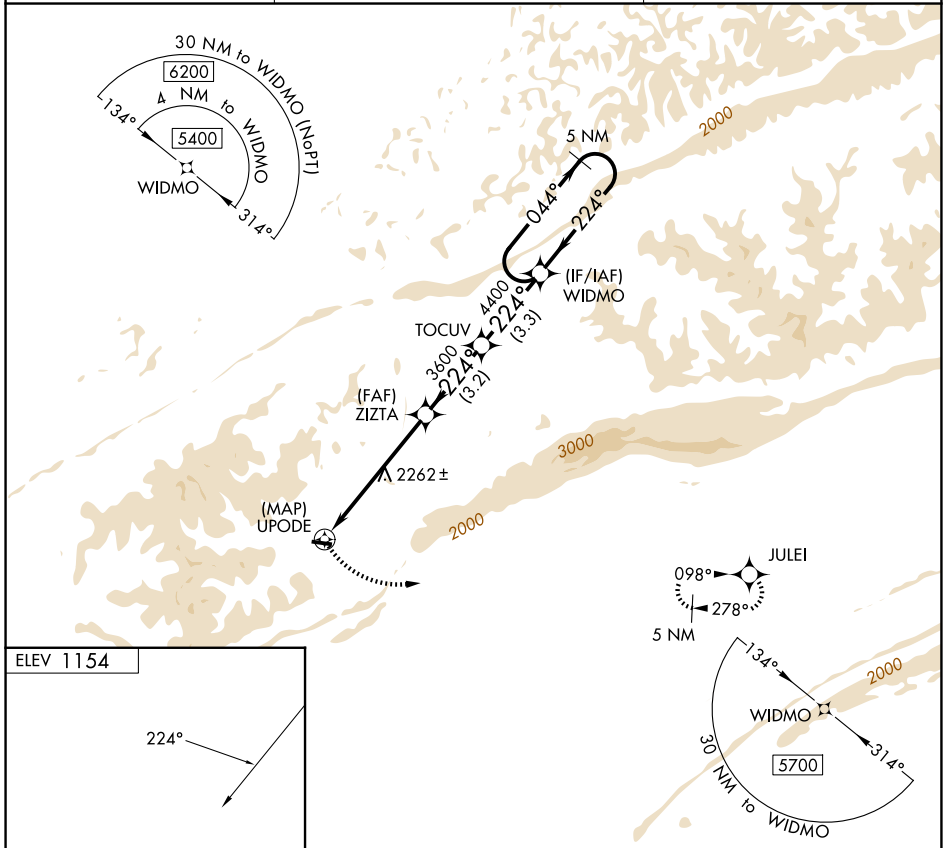
RNAV (GPS)-A

MIDDLESBORO/BELL COUNTY (1A6)

⚠ DME/DME RNP-0.3 NA. When local altimeter setting not received, use London altimeter setting: increase all MDA 100 feet. Procedure NA at night. Helicopter visibility reduction below 1 SM NA.

⚠ MISSED APPROACH: Climbing left turn to 5200 direct JULEI and hold.

AWOS-3 119.425	INDIANAPOLIS CENTER 124.625 371.925	UNICOM 122.8 (CTAF)
--------------------------	---	-------------------------------



CATEGORY	A	B	C	D
CIRCLING	2780-1¼ 1626 (1700-1¼)	3080-1½ 1926 (2000-1½)	NA	

RNAV (GPS)-A

SE-1, 14 MAY 2026 to 11 JUN 2026

SE-1, 14 MAY 2026 to 11 JUN 2026