

(BLTWY7.BLTWY) 21280

# BLTWY SEVEN DEPARTURE (RNAV) AL-10328 (FAA)

HOUSTON EXEC (TME)  
HOUSTON, TEXAS

ATIS  
119.525  
CLNC DEL  
132.075  
GND CON  
132.075  
EXECUTIVE TOWER \*  
126.975 (CTAF)  
HOUSTON DEP CON  
123.8 257.7

**TOP ALTITUDE:  
ASSIGNED BY ATC**

NOTE: RADAR required.  
NOTE: DME/DME/IRU or GPS required.  
NOTE: RNAV 1.

### TAKEOFF MINIMUMS

Rwy 18, 36: Standard with minimum climb of 500' per NM to 680.

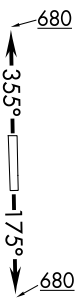
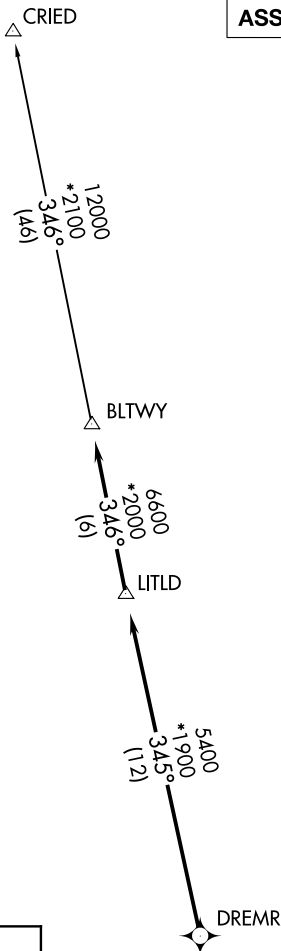
**▼ DEPARTURE ROUTE DESCRIPTION**

TAKEOFF RUNWAY 18: Climb on heading 175° to 680 for RADAR vectors to DREMR, thence . . .

TAKEOFF RUNWAY 36: Climb on heading 355° to 680 for RADAR vectors to DREMR, thence . . .

...on track 345° to LITLD, then on track 346° to BLTWY, then on (transition). Maintain ATC assigned altitude. Expect filed altitude 10 minutes after departure.

**CRIED TRANSITION (BLTWY7.CRIED)**



NOTE: Chart not to scale.

BLTWY SEVEN DEPARTURE (RNAV)  
(BLTWY7.BLTWY) 07OCT21

HOUSTON, TEXAS  
HOUSTON EXEC (TME)

SC-5, 14 MAY 2026 to 11 JUN 2026

SC-5, 14 MAY 2026 to 11 JUN 2026