

(CRIED1.CRIED) 24193

# CRIED ONE DEPARTURE

AL-10328 (FAA)

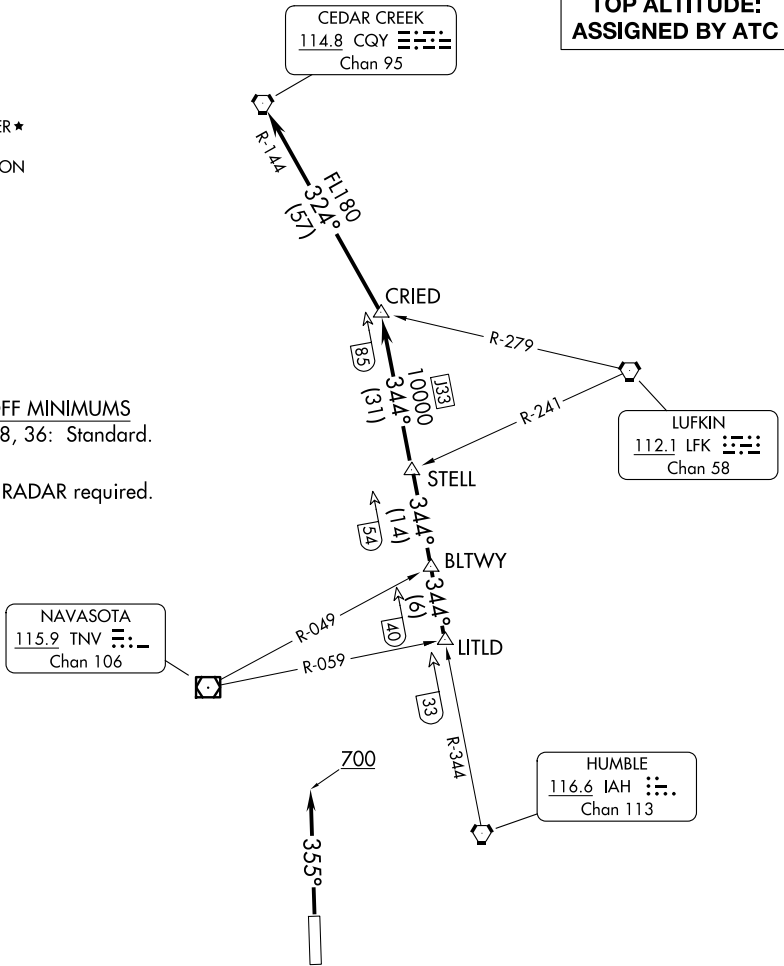
HOUSTON EXEC (TME)  
HOUSTON, TEXAS

ATIS  
119.525  
CLNC DEL  
132.075  
GND CON  
132.075  
EXECUTIVE TOWER ★  
126.975 (CTAF)  
HOUSTON DEP CON  
123.8 257.7

**TOP ALTITUDE:  
ASSIGNED BY ATC**

TAKEOFF MINIMUMS  
Rwys 18, 36: Standard.

NOTE: RADAR required.



NOTE: Chart not to scale.

## DEPARTURE ROUTE DESCRIPTION

**TAKEOFF RUNWAY 18:** When entering controlled airspace, climb on assigned heading for RADAR vectors to LITLD INT. Maintain ATC assigned altitude. Expect filed altitude 10 minutes after departure, thence. . . .

**TAKEOFF RUNWAY 36:** Climb on heading 355° to 700 before turning. When entering controlled airspace, climb on assigned heading for RADAR vectors to LITLD INT. Maintain ATC assigned altitude. Expect filed altitude 10 minutes after departure, thence. . . .

. . . . on IAH R-344 to STELL INT, then on IAH R-344 to CRIED INT, then left turn on CQY R-144 to CQY VORTAC.

# CRIED ONE DEPARTURE

(CRIED1.CRIED) 07OCT21

HOUSTON, TEXAS  
HOUSTON EXEC (TME)

SC-5, 14 MAY 2026 to 11 JUN 2026