

# LUFKIN FOUR DEPARTURE

HOUSTON DEP CON  
123.8 257.7  
ATIS  
119.525  
CLNC DEL  
132.075  
GND CON  
132.075  
EXECUTIVE TOWER ★  
126.975 (CTAF)

**TOP ALTITUDE:  
ASSIGNED BY ATC**

LITTLE ROCK  
115.1 LIT ::::  
Chan 98

RADAR and DME required.

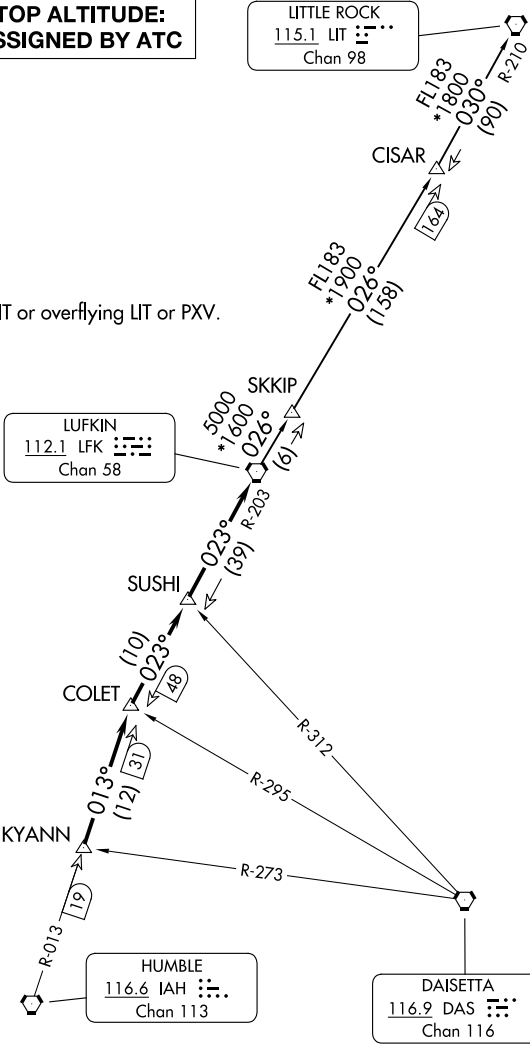
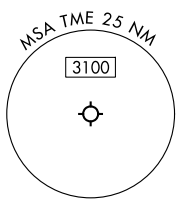
NOTE: For aircraft destined LIT or overflying LIT or PXV.

LUFKIN  
112.1 LFK ::::  
Chan 58

HUMBLE  
116.6 IAH ::::  
Chan 113

DAISETTA  
116.9 DAS ::::  
Chan 116

TAKEOFF MINIMUMS  
Rwys 18, 36: Standard.



NOTE: Chart not to scale.

(CONTINUED ON FOLLOWING PAGE)

# LUFKIN FOUR DEPARTURE



## DEPARTURE ROUTE DESCRIPTION

TAKEOFF RUNWAY 18: When entering controlled airspace, climb on assigned heading for RADAR vectors to KYANN INT. Maintain ATC assigned altitude. Expect filed altitude 10 minutes after departure, thence. . .

TAKEOFF RUNWAY 36: Climb on heading 355° to 700 before turning. When entering controlled airspace, climb on assigned heading for RADAR vectors to KYANN INT. Maintain ATC assigned altitude. Expect filed altitude 10 minutes after departure, thence. . .

. . .on IAH R-013 to COLET INT, then on depicted route to LFK VORTAC.

LITTLE ROCK TRANSITION (LFK4.LIT): From over LFK VORTAC on LFK R-026 to CISAR, then on LIT R-210 to LIT VORTAC.

SC-5, 14 MAY 2026 to 11 JUN 2026

SC-5, 14 MAY 2026 to 11 JUN 2026