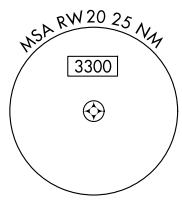
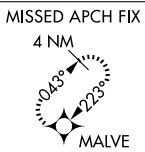
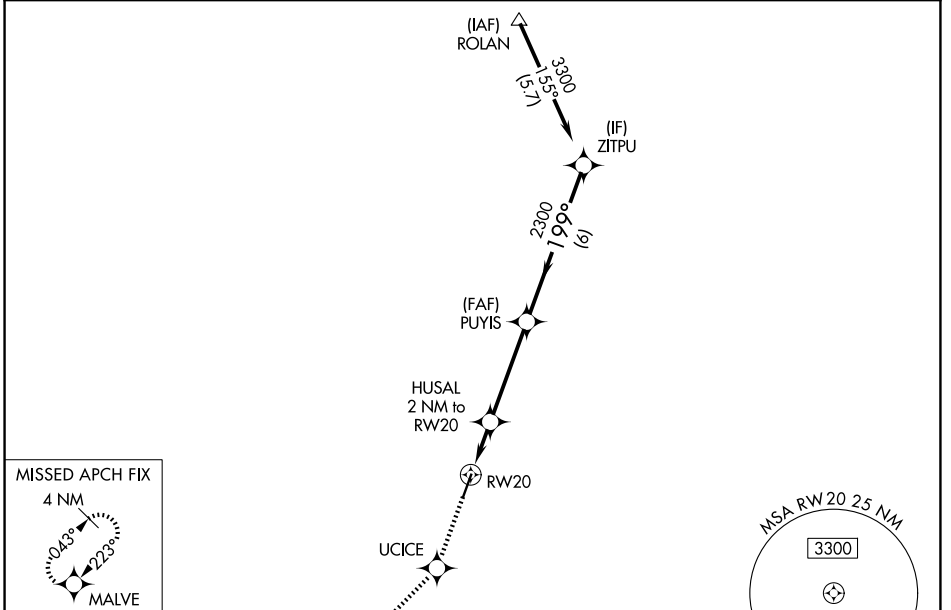


WAAS CH 40309 W20A	APP CRS 199°	Rwy Ldg 5002 TDZE 388 Apt Elev 389
--	------------------------	---

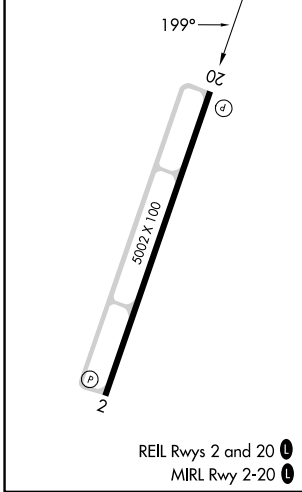
RNAV (GPS) RWY 20

SALINE COUNTY RGNL (SUZ)

RNP APCH - GPS.		MISSED APPROACH: Climb to 2100 direct UCICE and on track 224° to MALVE and hold.
<p>⚠ Rwy 20 helicopter visibility reduction below ¾ SM NA. For uncompensated Baro-VNAV systems, LNAV/VNAV NA below -15°C and above 54°C.</p>		
AWOS-3 132.125	LITTLE ROCK APP CON 119.5 306.2	UNICOM 122.8 (CTAF) 0



ELEV 389	TDZE 388
-----------------	-----------------



2100	UCICE	tr 224°	MALVE	ZITPU
			HUSAL 2 NM to RW20	3300
			1.4 NM to RW20	199°
			1080	2300
			1.4 NM	6 NM
			0.6 NM	
			3.8 NM	
				GP 3.00° TCH 60
CATEGORY	A	B	C	D
LPV DA		642-¾	254 (300-¾)	
LNAV/VNAV DA		850-1⅜	462 (500-1⅜)	
LNAV MDA	900-1	512 (600-1)	900-1⅜	512 (600-1⅜)
CIRCLING	980-1 591 (600-1)	1080-1 691 (700-1)	1200-2½ 811 (900-2½)	1200-2¾ 811 (900-2¾)

REIL Rwy 2 and 20 **0**
MIRL Rwy 2-20 **0**