

WAAS CH 56406 W14A	APP CRS 142°	Rwy Idg TDZE Apt Elev	4903 19 20
--	------------------------	-----------------------------	---------------------------------------

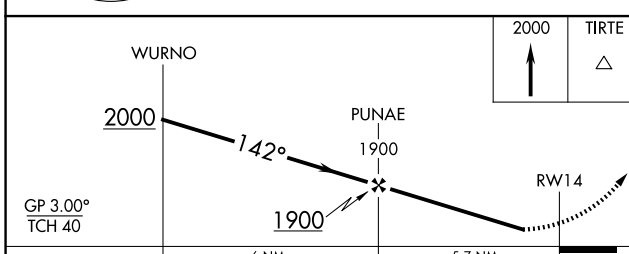
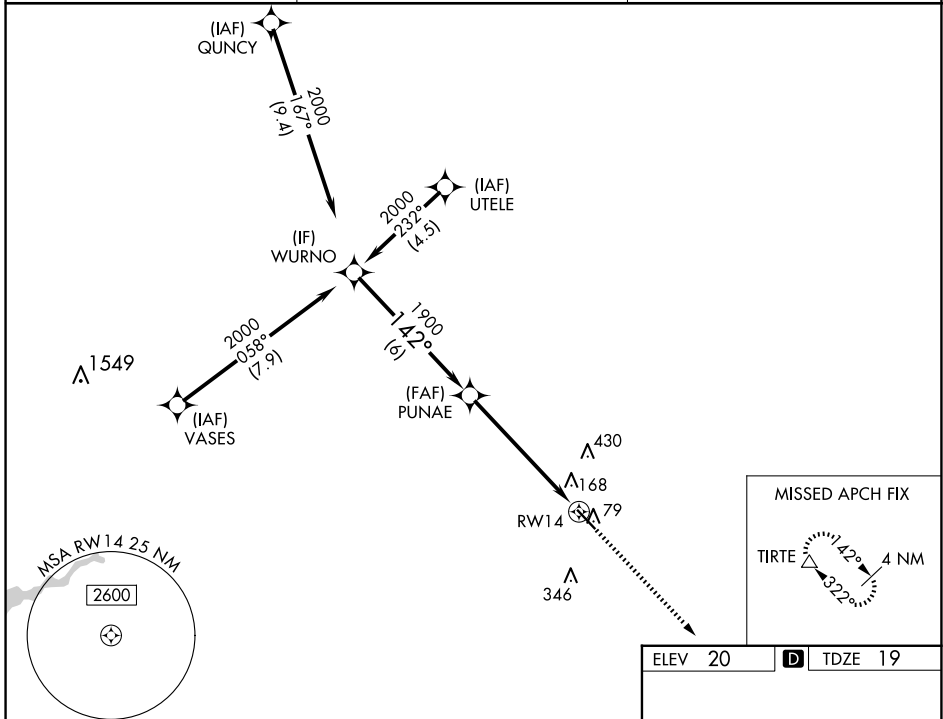
RNAV (GPS) RWY 14

LA BELLE MUNI (X14)

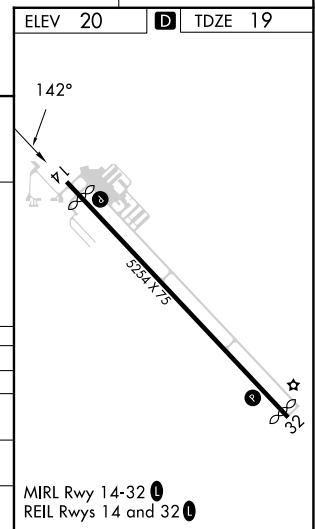
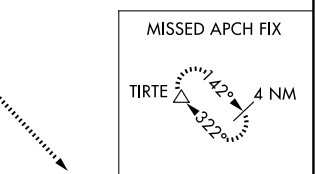
▼ Baro-VNAV NA. DME/DME RNP-0.3 NA. Helicopter visibility reduction below 1 SM NA. Use Southwest Florida Intl altimeter setting; when not received use Page Fld altimeter setting and increase all DA 8 feet, all MDA 20 feet and LNAV Cat D visibility ¼ mile.

▲ NA MISSED APPROACH: Climb to 2000 direct TIRTE and hold.

RSW ASOS 124.65	FORT MYERS APP CON ★ 126.8	UNICOM 122.8 (CTAF) 0
---------------------------	--------------------------------------	---------------------------------



CATEGORY	A	B	C	D
LPV DA		388-1¼	369 (400-1¼)	
LNAV/VNAV DA		565-2	546 (600-2)	
LNAV MDA	520-1	501 (500-1)	520-1½	501 (500-1½)
CIRCLING	580-1	560 (600-1)	800-2¼ 780 (800-2¼)	800-2½ 780 (800-2½)



SE-3, 14 MAY 2026 to 11 JUN 2026

SE-3, 14 MAY 2026 to 11 JUN 2026