

WAAS CH 48927 W07A	APP CRS 067°	Rwy ldg 5500 TDZE 585 Apt Elev 595
--	------------------------	---

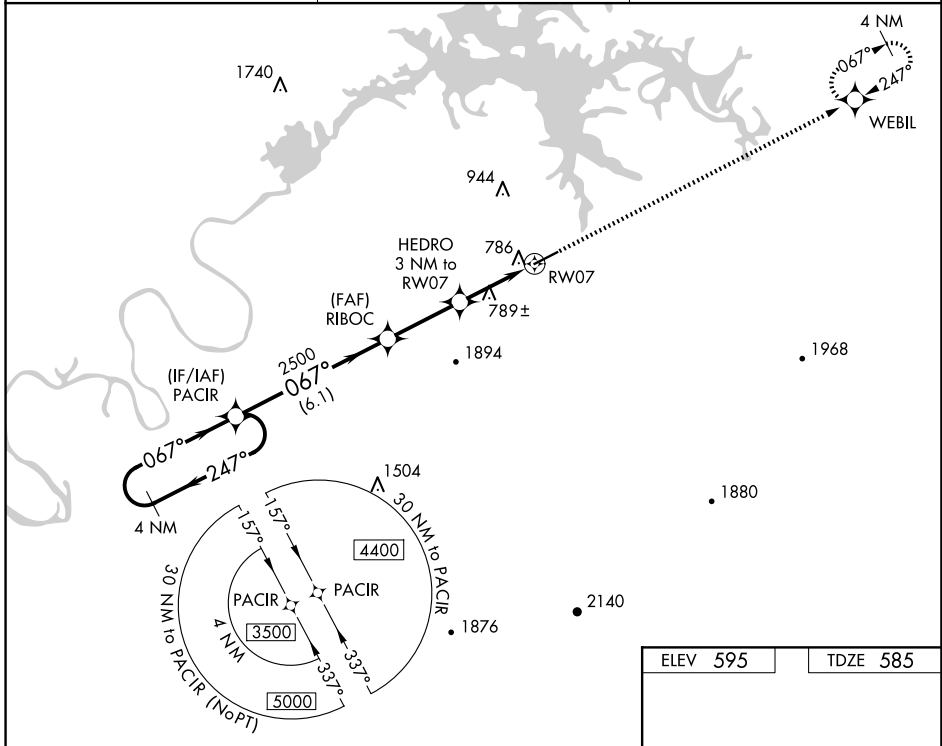
RNAV (GPS) RWY 7

CENTRE PIEDMONT/CHEROKEE COUNTY RGNL (PYP)

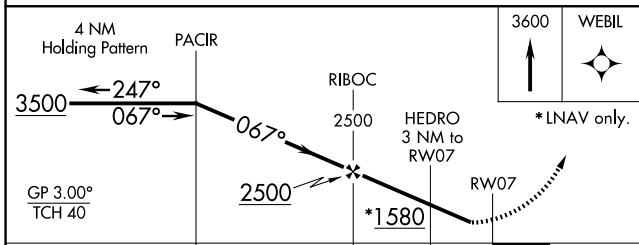
NA Baro-VNAV NA, DME/DME RNP-0.3 NA. Helicopter visibility reduction below $\frac{3}{4}$ SM NA. Use Gadsden altimeter setting; when not received use Anniston altimeter setting and increase all DA/MDA 20 feet; increase LPV all Cats and LNAV Cats C/D visibility $\frac{1}{8}$ mile.

MISSED APPROACH: Climb to 3600 direct WEBIL and hold.

GAD AWOS-3PT 127.825	ATLANTA CENTER 124.5 270.325	CTAF 122.90
--------------------------------	--	-----------------------



ELEV 595	TDZE 585
----------	----------



CATEGORY	A	B	C	D
LPV DA		896-1	311 (400-1)	
LNAV/VNAV DA		1009-1½	424 (500-1½)	
LNAV MDA	1100-1	515 (600-1)	1100-1⅜	515 (600-1⅜)
CIRCLING	1180-1	585 (600-1)	1360-2¼ 765 (800-2¼)	2260-3 1665 (1700-3)

MIRL Rwy 7-25

SE-4, 14 MAY 2026 to 11 JUN 2026

SE-4, 14 MAY 2026 to 11 JUN 2026