

APP CRS <b>244°</b>	Rwy Ldg TDZE Apt Elev	<b>4000</b> <b>574</b> <b>574</b>
------------------------	-----------------------------	---

# RNAV (GPS) RWY 22

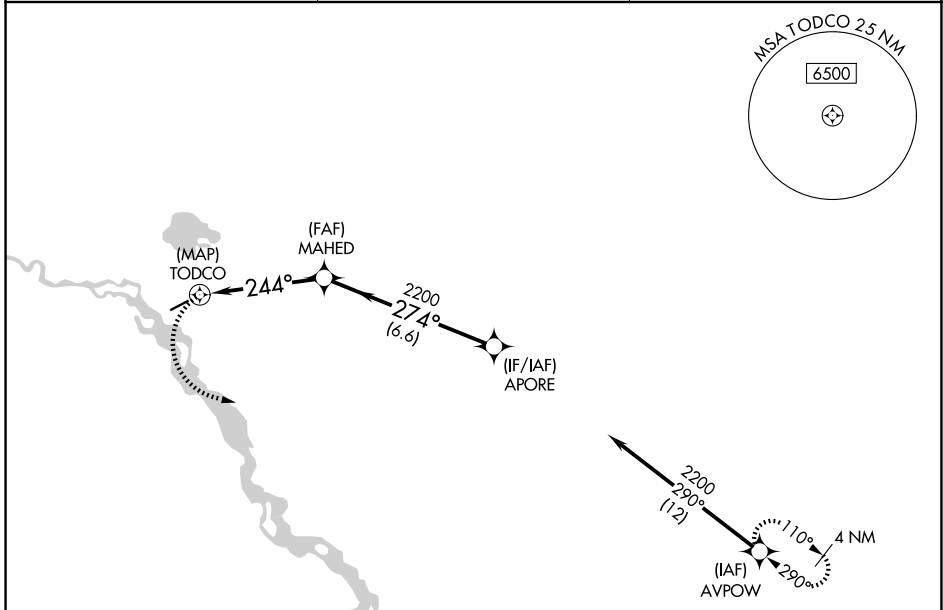
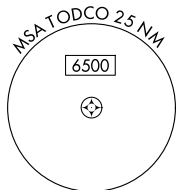
VENETIE (VEE) (PAVE)

RNP APCH-GPS.

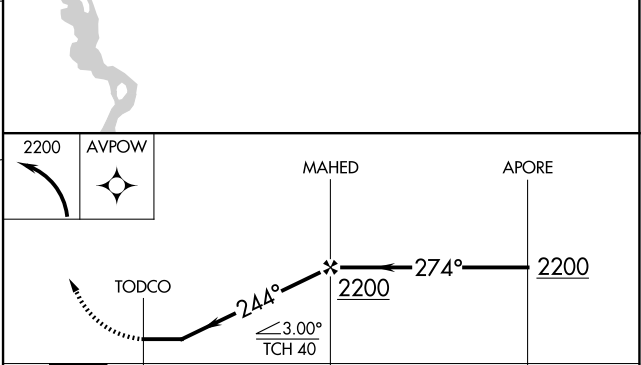
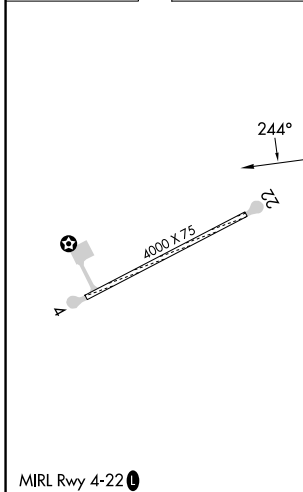
**NA** Rwy 22 helicopter visibility reduction below 1 SM NA. Use Fort Yukon altimeter setting. Procedure NA at night.

MISSED APPROACH: Climbing left turn to 2200, direct AVPOW and hold.

FYU/PFYU AWOS-3P <b>125.8</b>	ANCHORAGE CENTER <b>135.0 225.4</b>	CTAF <b>122.9</b>
----------------------------------	--	----------------------



ELEV 574	TDZE 574
----------	----------



CATEGORY	A	B	C	D
LNAV MDA	1160-1	586 (600-1)	1160-1¾	586 (600-1¾)
CIRCLING	1180-1	606 (700-1)	1180-1¾ 606 (700-1¾)	1260-2¼ 686 (700-2¼)

AK, 14 MAY 2026 to 09 JUL 2026

AK, 14 MAY 2026 to 09 JUL 2026