

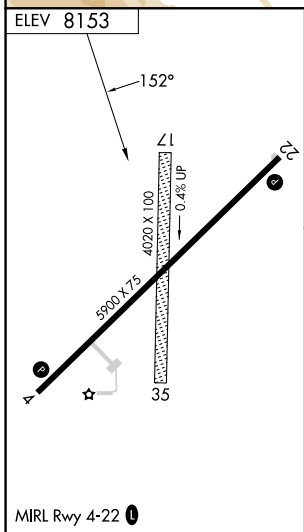
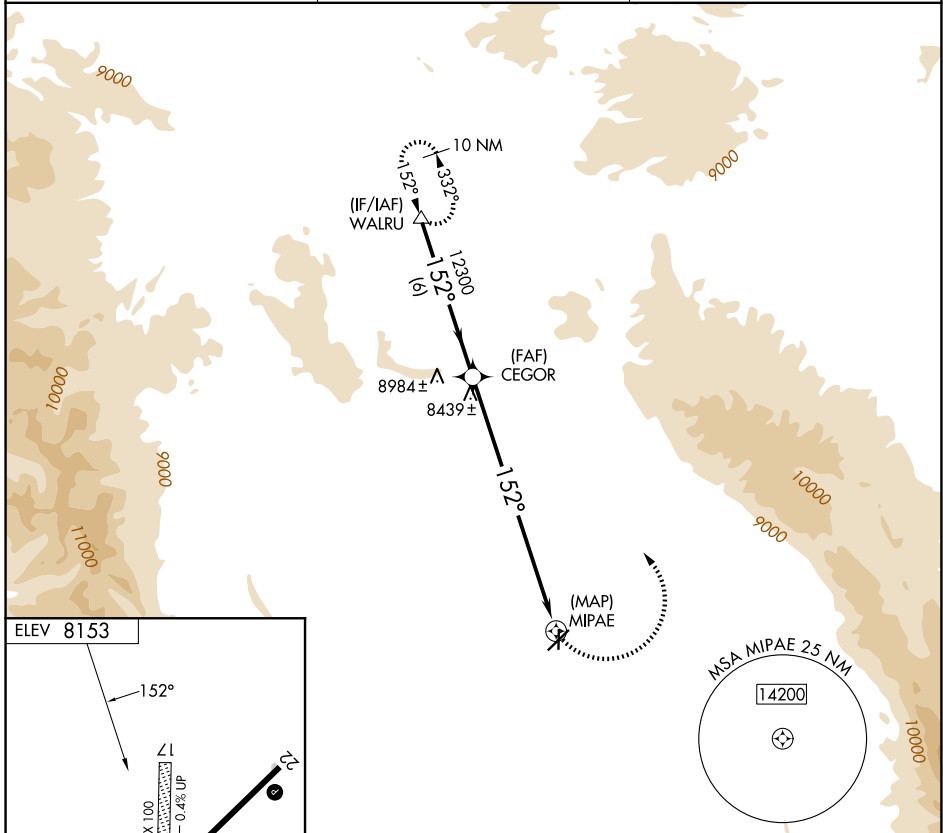
APP CRS 152°	Rwy Ldg TDZE Apt Elev	N/A N/A 8153
------------------------	-----------------------------	---

RNAV (GPS)-A
WALDEN-JACKSON COUNTY (33V)

NA When local altimeter setting not received, procedure NA. Circling NA southeast of Rwy 4-22. Circling to Rwy 17 and 35 NA. DME/DME RNP-0.3 NA.

MISSED APPROACH: Climbing left turn to 14200 direct WALRU and hold, continue climb-in-hold to 14200.

AWOS-3 118.625	DENVER CENTER 126.5 371.85	CTAF 122.9
--------------------------	--------------------------------------	----------------------



	WALRU	CEGOR	MIPAE
	14200	12300	14200
Procedure Turn	NA		
	6 NM	9.6 NM	
CATEGORY	A	B	C
CIRCLING	8880-1	727 (800-1)	8880-2 727 (800-2)
			NA

SW-1, 14 MAY 2026 to 11 JUN 2026

SW-1, 14 MAY 2026 to 11 JUN 2026