

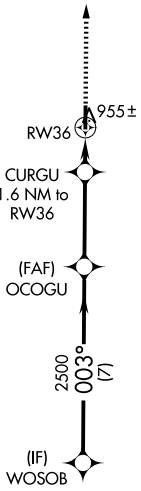
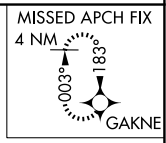
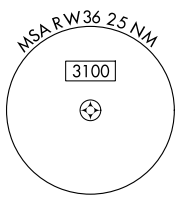
WAAS CH <b>45833</b> <b>W36A</b>	APP CRS <b>003°</b>	Rwy Ldg TDZE Apt Elev	<b>4400</b> <b>884</b> <b>898</b>
--	------------------------	-----------------------------	---

# RNAV (GPS) RWY 36

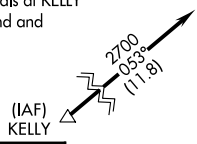
HENDRICKS COUNTY-GORDON GRAHAM FLD (2R2)

NA	Baro-VNAV NA. DME/DME RNP-0.3 NA. Use Indianapolis Intl altimeter setting. Helicopter visibility reduction below 3/4 SM NA.	MISSED APPROACH: Climb to 2700 direct GAKNE and hold.
----	---	---

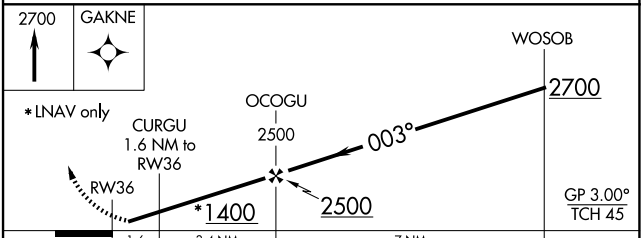
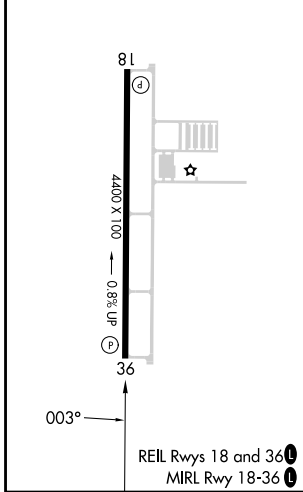
AWOS-3PT <b>118.025</b>	IND ASOS <b>134.25</b>	INDIANAPOLIS APP CON <b>121.1</b>	UNICOM <b>122.7 (CTAF)</b>
----------------------------	---------------------------	--------------------------------------	-------------------------------



Procedure NA for arrivals at KELLY on V11 southwest bound and V12 westbound.



ELEV 898	TDZE 884
----------	----------



CATEGORY	A	B	C	D
LPV DA	1168-7/8	284 (300-7/8)		NA
LNAV/VNAV DA	1168-7/8	284 (300-7/8)		NA
LNAV MDA	1240-1	356 (400-1)		NA
CIRCLING	1380-1 482 (500-1)	1560-1 662 (700-1)	1600-2 702 (800-2)	NA

EC-2, 14 MAY 2026 to 11 JUN 2026

EC-2, 14 MAY 2026 to 11 JUN 2026