

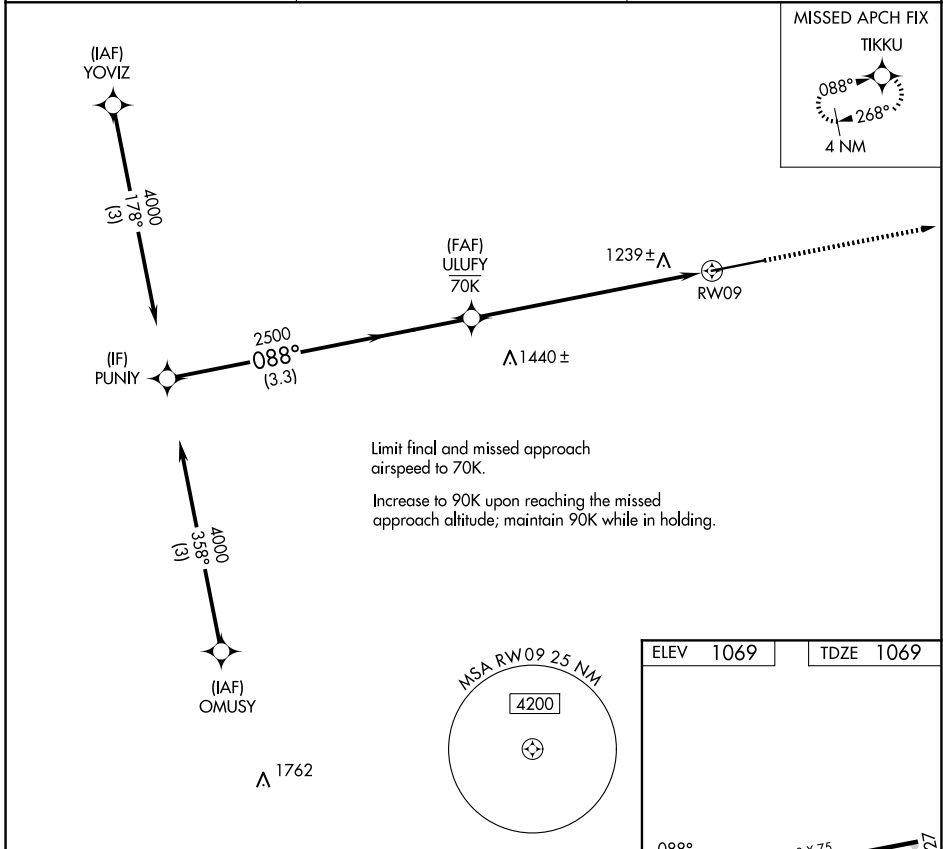
COPTER RNAV (GPS) Y RWY 9

GREENE COUNTY (WAY)

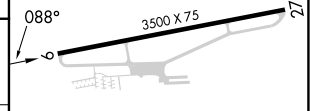
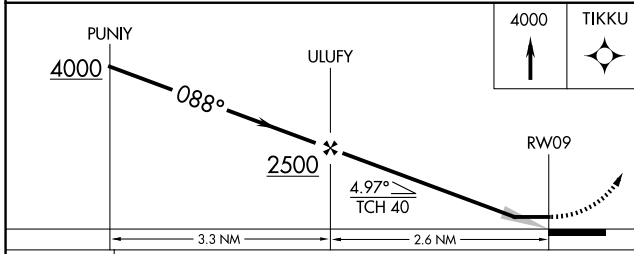
APP CRS	Rwy Ldg	3500
088°	TDZE	1069
	Apt Elev	1069

RNP APCH - GPS.	MISSED APPROACH: Climb to 4000 direct TIKKU and hold, continue climb-in-hold to 4000.
NA Use Washington altimeter setting. Procedure NA at night.	

AFJ AWOS-3PT 119.175	CLARKSBURG APP CON★ 121.15 284.65	UNICOM 122.8 (CTAF)
--------------------------------	---	-------------------------------



ELEV 1069	TDZE 1069
-----------	-----------



CATEGORY	COPTER	
LNAV MDA	1560-1	491 (500-1)

NE-4, 14 MAY 2026 to 11 JUN 2026

NE-4, 14 MAY 2026 to 11 JUN 2026