

APP CRS	Rwy Ldg	3500
088°	TDZE	1069
	Apt Elev	1069

RNAV (GPS) Z RWY 9

GREENE COUNTY (WAY)

RNP APCH - GPS.

▼ Procedure NA at night. Rwy 9 helicopter visibility reduction below 1 SM NA. Use Washington altimeter setting.

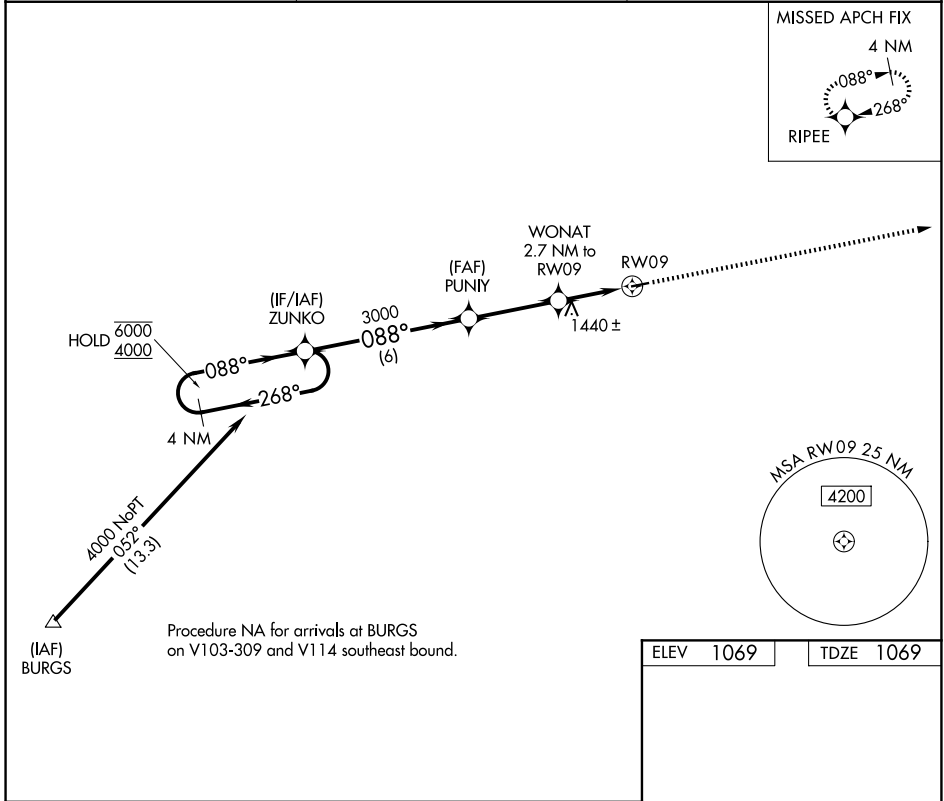
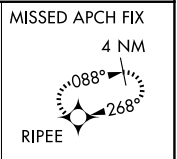
▲ NA

MISSED APPROACH: Climb to 4000 direct RIPEE and hold, continue climb-in-hold to 4000.

AFJ AWOS-3PT
119.175

CLARKSBURG APP CON*
121.15 284.65

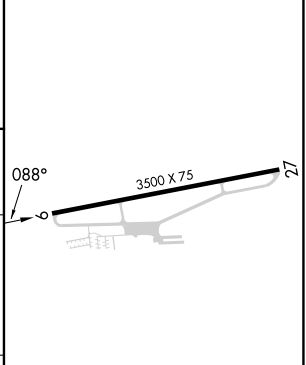
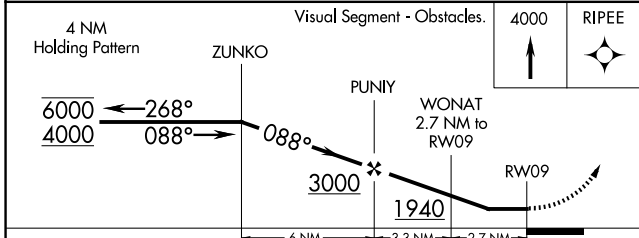
UNICOM
122.8 (CTAF)



NE-4, 14 MAY 2026 to 11 JUN 2026

NE-4, 14 MAY 2026 to 11 JUN 2026

ELEV 1069	TDZE 1069
-----------	-----------



CATEGORY	A	B	C	D
LNVA MDA	1760-1	691 (700-1)	1760-2 691 (700-2)	NA
CIRCLING	1880-1¼ 811 (900-1¼)	2220-1½ 1151 (1200-1½)	2280-3 1211 (1300-3)	NA