

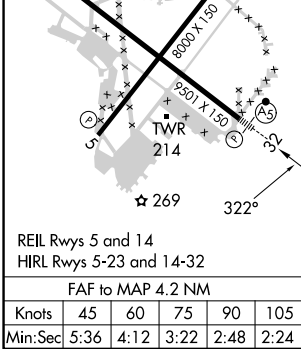
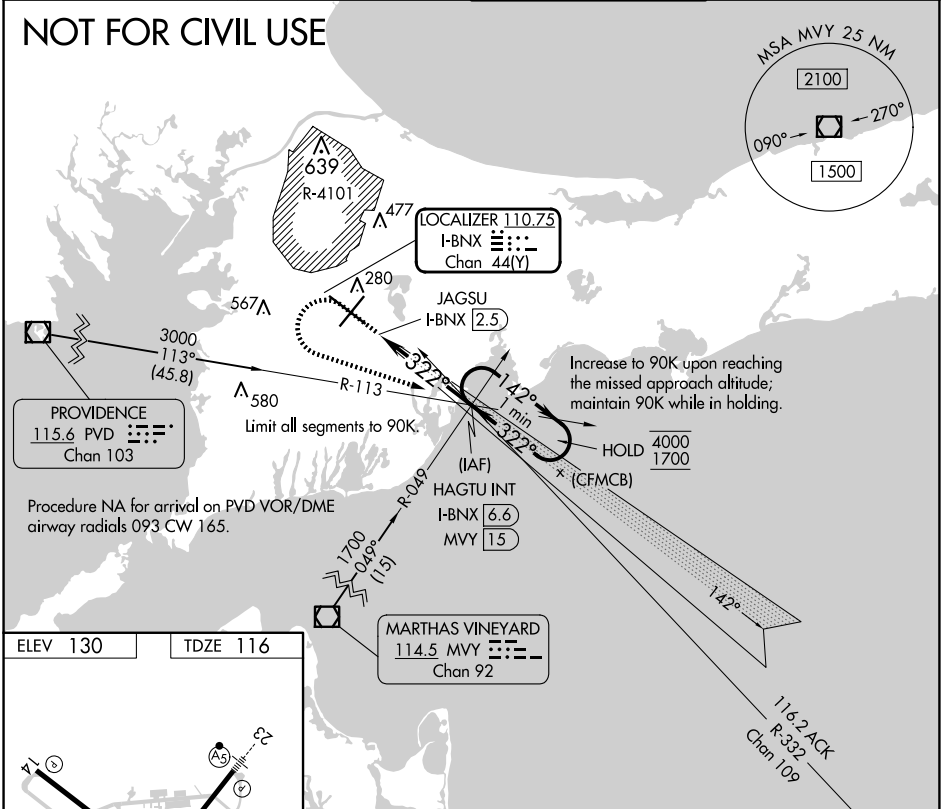
LOC/DME I-BNX <b>110.75</b> Chan <b>44(Y)</b>	APP CRS <b>322°</b>	Rwy Idg TDZE <b>116</b> Apt Elev <b>130</b>	<b>9501</b>
---	------------------------	---	-------------

# COPTER ILS Y or LOC Y RWY 32

CAPE COD COAST GUARD AIR STATION (F'MH)

<p><b>NA</b> U.S. Coast Guard use only. For inop ALS, increase visibility to RVR 2400.</p>	<p>MALS R </p>	<p>MISSED APPROACH: Climb to 1400 then climbing left turn to 2000 on heading 123° and I-BNX localizer SE course to HAGTU INT/I-BNX 6.6 DME and hold.</p>
	<p>ATIS <b>120.475 236.825</b></p>	<p>BOSTON APP CON <b>118.2 284.6</b></p>
		<p>GND CON <b>124.15 275.8</b></p>

**NOT FOR CIVIL USE**



<p>1400 ↑ hdg 123°</p>	<p>2000</p>	<p>I-BNX SE crs</p>	<p>HAGTU INT</p>	<p>HAGTU INT I-BNX <b>6.6</b> MVY <b>15</b></p>	<p>One Minute Holding Pattern</p>
<p>Use I-BNX DME when on the localizer course.</p>					
<p>0.7 NM</p>		<p>4.2 NM</p>		<p>1700 322° ← 4000 → 1700 322° 1700 GS 3.00° TCH 50</p>	
<p>CATEGORY</p>			<p>COPTER</p>		
<p>H-ILS 32</p>			<p>216/12 100 (100-¼)</p>		
<p>H-LOC 32</p>			<p>520/12 404 (400-¼)</p>		

NE-1, 14 MAY 2026 to 11 JUN 2026

NE-1, 14 MAY 2026 to 11 JUN 2026