

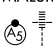
LOC/DME I-FMH <b>109.55</b> Chan <b>32(Y)</b>	APP CRS <b>234°</b>	Rwy Idg TDZE <b>126</b> Apt Elev <b>130</b>	<b>8000</b>
---	------------------------	---	-------------

# ILS Z or LOC Z RWY 23

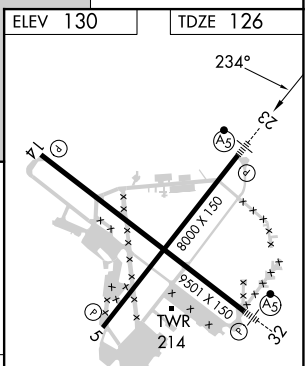
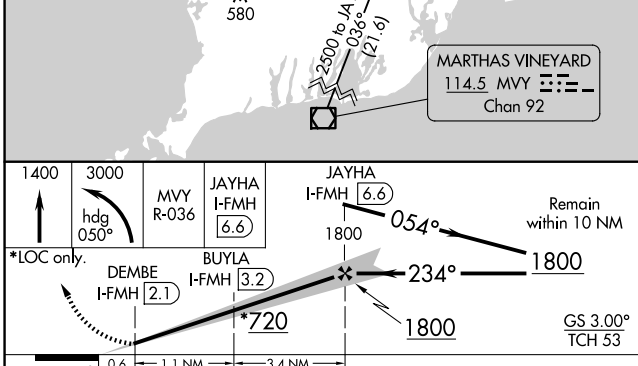
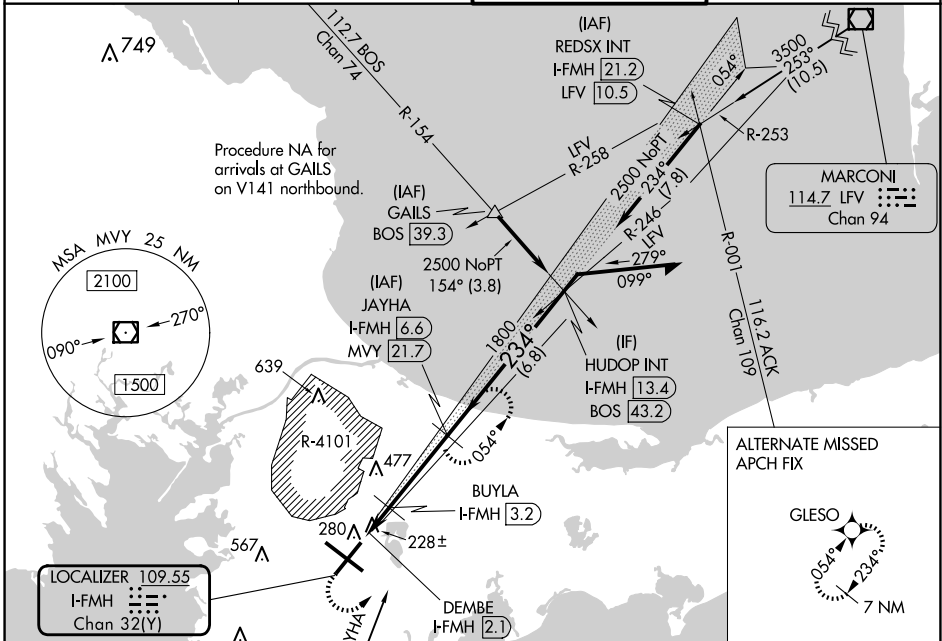
CAPE COD COAST GUARD AIR STATION (F'MH)

DME required.

**⚠** Circling NA northeast of Rwy 14 and northwest of Rwy 23. For inop ALS, increase S-LOC 23 Cats C/D visibility to RVR 5500. #RVR 1800 authorized with use of FD or AP or HUD to DA.

**MALSR**  MISSED APPROACH: Climb to 1400 then climbing left turn heading 050° and MCVY VOR/DME R-036 to 3000 direct JAYHA and hold.

ATIS <b>120.475 236.825</b>	BOSTON APP CON <b>118.2 284.6</b>	COAST GUARD TOWER <b>128.425 291.1</b>	GND CON <b>124.15 275.8</b>
--------------------------------	--------------------------------------	---	--------------------------------



CATEGORY	A	B	C	D
S-ILS 23#		326/24	200 (200-½)	
S-LOC 23	480/24	354 (400-½)	480/30	354 (400-¾)
<b>C</b> CIRCLING	580-1 450 (500-1)	640-1 510 (600-1)	900-2¼ 770 (800-2¼)	900-2½ 770 (800-2½)

REIL Rwys 5 and 14  
HIRL Rwys 5-23 and 14-32

NE-1, 14 MAY 2026 to 11 JUN 2026

NE-1, 14 MAY 2026 to 11 JUN 2026