

WAAS CH 58310 W30A	APP CRS 303°	Rwy Ldg TDZE Apt Elev	4000 43 43
--	------------------------	-----------------------------	---------------------------------------

RNAV (GPS) RWY 30

QUINHAGAK (AQH) (PAQH)

RNP APCH - GPS.

⚠ For uncompensated Baro-VNAV systems, LNAV/VNAV NA below -25°C or above 54°C.

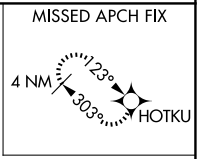
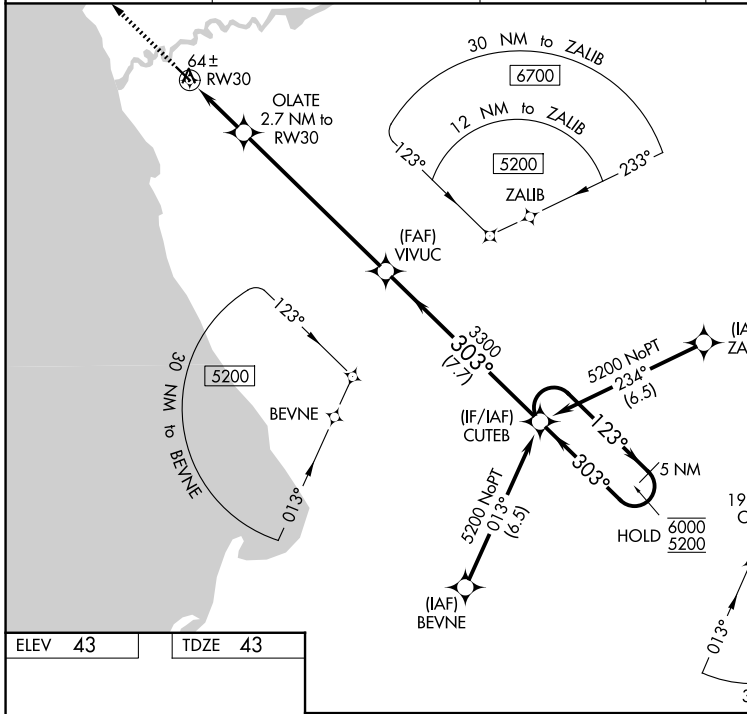
MISSED APPROACH: Climb to 2500 direct HOTKU and hold, continue climb-in-hold to 2500.

AWOS-3P
121.575

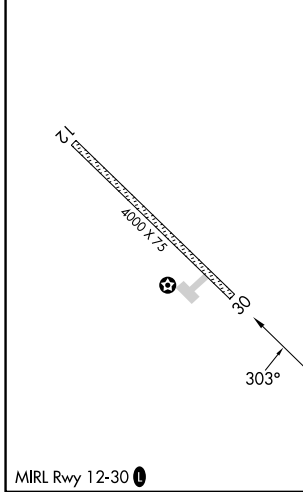
ANCHORAGE CENTER
125.2 372.0

KENAI RADIO
122.1

UNICOM
122.8 (CTAF) 0



ELEV 43	TDZE 43
---------	---------



2500	HOTKU				
OLATE 2.7 NM to RW30 0.7 NM to RW30		VIVUC 3300	CUTEB 3300	5 NM Holding Pattern	
RW30		123° → 6000 ← 303° 5200		GP 3.10° TCH 35	
CATEGORY	A	B	C	D	
LPV DA	293-1		250 (300-1)		
LNAV/VNAV DA	293-1		250 (300-1)		
LNAV MDA	320-1		277 (300-1)		
CIRCLING	400-1 357 (400-1)	500-1 457 (500-1)	580-1½ 537 (600-1½)	600-2 557 (600-2)	

AK, 14 MAY 2026 to 09 JUL 2026

AK, 14 MAY 2026 to 09 JUL 2026