

WAAS CH <b>65633</b> <b>W29A</b>	APP CRS <b>285°</b>	Rwy Ldg TDZE <b>1183</b> Apt Elev <b>1183</b>	<b>3302</b> <b>1183</b> <b>1183</b>
--	------------------------	---	---

# RNAV (GPS) RWY 29

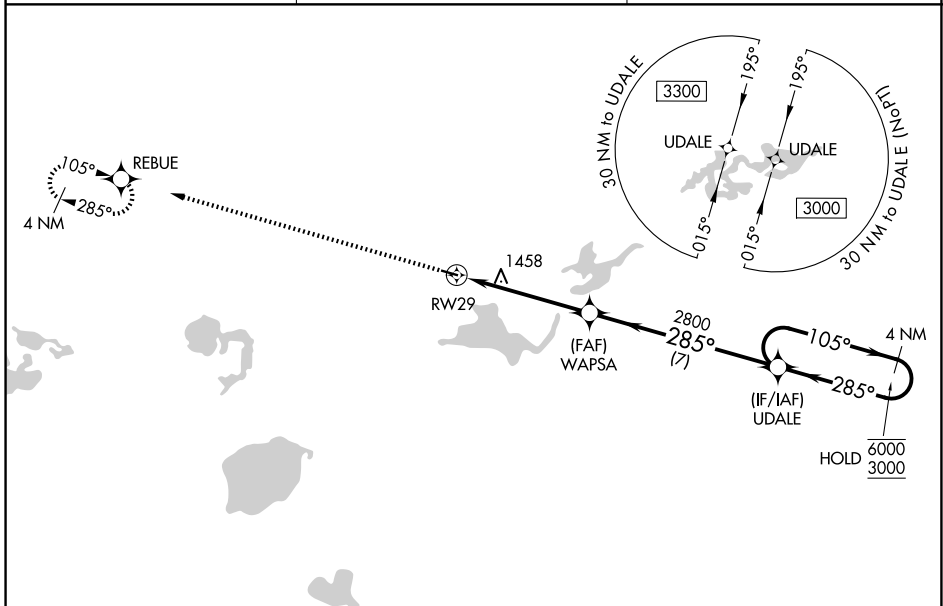
PAYNESVILLE MUNI (PEX)

RNP APCH - GPS.

Baro-VNAV and VDP NA when using LJF altimeter setting. For uncompensated Baro-VNAV systems, LNAV/VNAV NA below -17°C or above 54°C. When local altimeter not received, use LJF altimeter setting and increase LPV DA to 1434 feet; increase LNAV/VNAV DA to 1771 feet and all visibilities ¼ SM. Increase all MDAs 60 feet and LNAV and Circling visibility Cat C ¼ SM.

MISSED APPROACH:  
Climb to 3000 direct REBUE and hold.

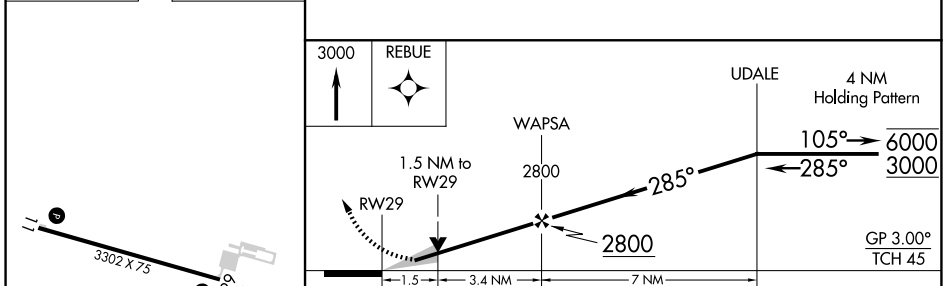
AWOS-3PT <b>120.35</b>	MINNEAPOLIS CENTER <b>125.5 323.1</b>	CTAF <b>122.9</b>
---------------------------	--	----------------------



NC-1, 14 MAY 2026 to 11 JUN 2026

NC-1, 14 MAY 2026 to 11 JUN 2026

ELEV 1183	TDZE 1183
-----------	-----------



CATEGORY	A	B	C	D
LPV DA	1383-1		200 (200-1)	NA
LNAV/VNAV DA	1720-1½		537 (600-1½)	NA
LNAV MDA	1720-1	537 (600-1)	1720-1½ 537 (600-1½)	NA
CIRCLING	1720-1 537 (600-1)	1760-1 577 (600-1)	1920-2 737 (800-2)	NA