

LOC/DME I-PUJ 109.15 Chan 28 (Y)	APP CRS 311°	Rwy Ldg TDZE Apt Elev 5505 1283 1289
--	------------------------	--

ILS or LOC RWY 31

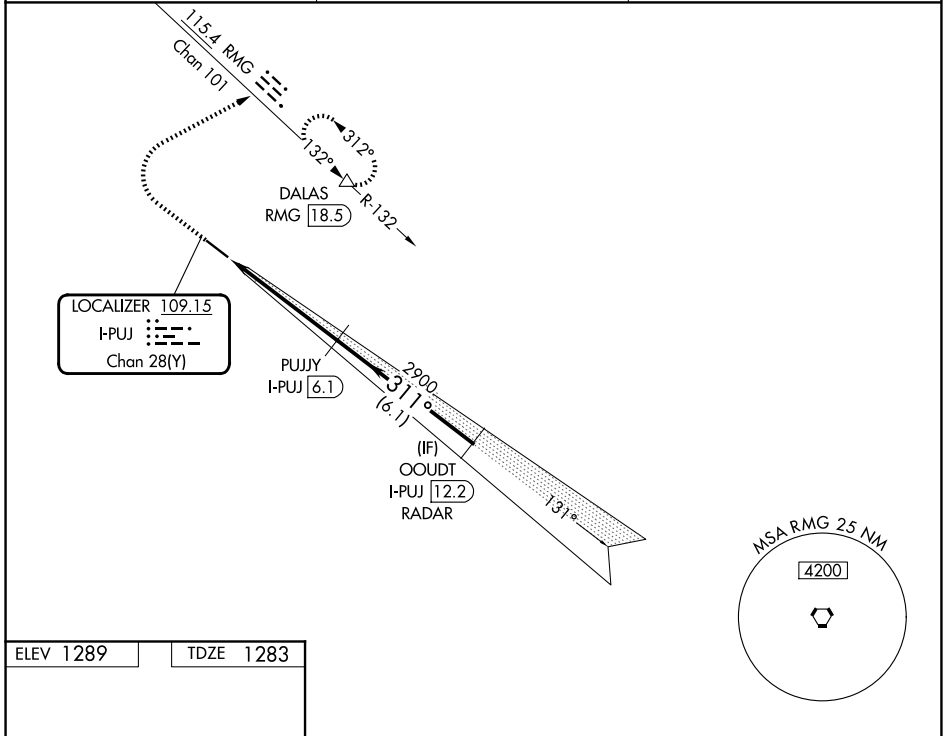
PAULDING NORTHWEST ATLANTA (PUJ)

DME required. RADAR required for procedure entry.

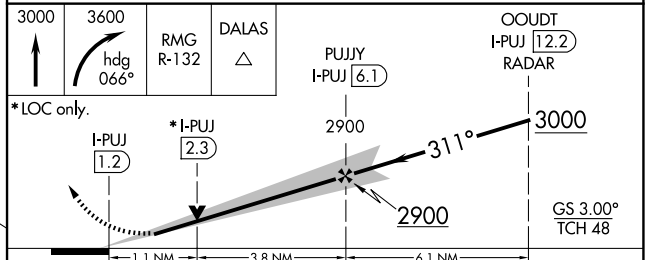
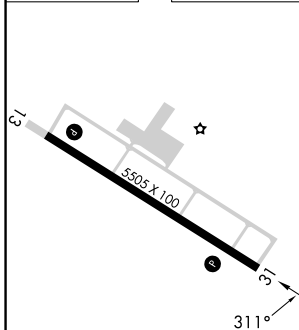
⚠ Autopilot coupled approach NA below 1680.

MISSED APPROACH: Climb to 3000 then climbing right turn to 3600 on heading 066° and RMG VORTAC R-132 to DALAS INT/RMG 18.5 DME and hold.

AWOS-3 126.225	ATLANTA APP CON 121.0 268.7	UNICOM 123.075 (CTAF) 0
--------------------------	---------------------------------------	--



ELEV 1289	TDZE 1283
-----------	-----------



CATEGORY	A	B	C	D
S-ILS 31	1483- ³ / ₄ 200 (200- ³ / ₄)			
S-LOC 31	1680-1	397 (400-1)	1680-1 ¹ / ₈	397 (400-1 ¹ / ₈)
CIRCLING	1880-1	591 (600-1)	1940-1 ³ / ₄ 651 (700-1 ³ / ₄)	1940-2 651 (700-2)

SE-4, 14 MAY 2026 to 11 JUN 2026

SE-4, 14 MAY 2026 to 11 JUN 2026