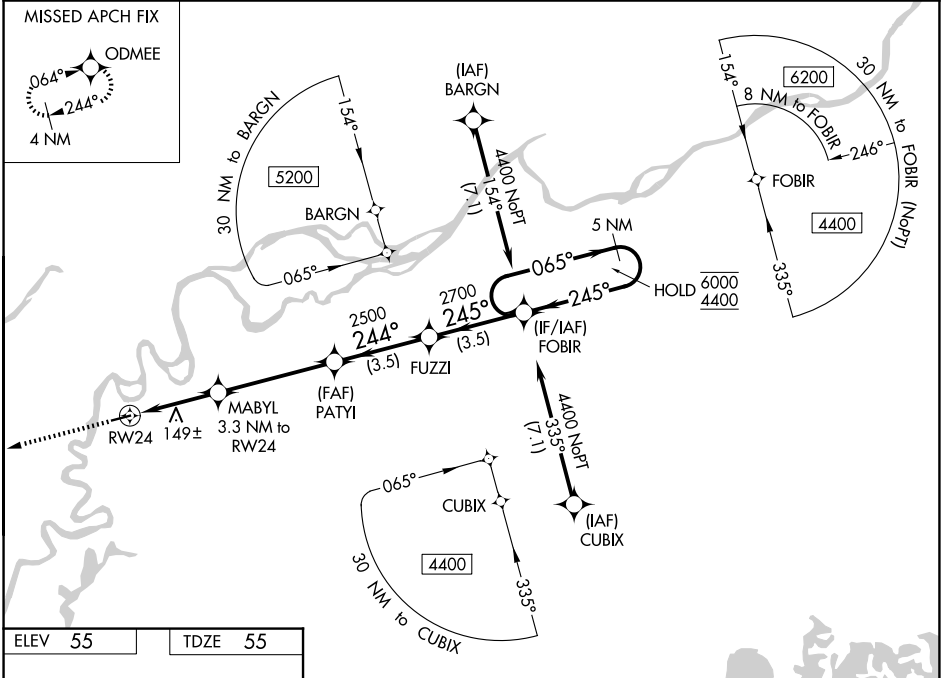


WAAS CH <b>78313</b> <b>W24A</b>	APP CRS <b>244°</b>	Rwy Ldg TDZE Apt Elev	<b>4000</b> <b>55</b> <b>55</b>
--	------------------------	-----------------------------	---------------------------------------

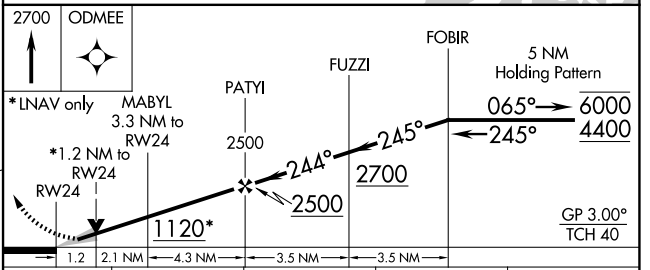
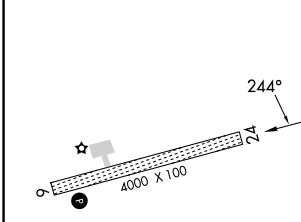
# RNAV (GPS) RWY 24

ROBERT/BOB/CURTIS MEML (D76) (PF'NO)

RNP APCH.	For uncompensated Baro-VNAV systems, LNAV/VNAV NA below -20°C or above 54°C.	MISSED APPROACH: Climb to 2700 direct ODMEE and hold, continue climb-in-hold to 2700.
-22°C		
AWOS-3P <b>120.0</b>	ANCHORAGE CENTER <b>119.2 263.0</b>	CTAF <b>122.7</b>



ELEV 55	TDZE 55
---------	---------



CATEGORY	A	B	C	D
LPV DA		305-1	250 (300-1)	
LNAV/VNAV DA		355-1	300 (300-1)	
LNAV MDA	460-1	405 (500-1)	460-1½	405 (500-1½)
CIRCLING	520-1	465 (500-1)	520-1½ 465 (500-1½)	760-2¼ 705 (800-2¼)

MIRL Rwy 6-24

AK, 14 MAY 2026 to 09 JUL 2026

AK, 14 MAY 2026 to 09 JUL 2026