

APP CRS	Rwy Ldg	3700
188°	TDZE	1762
	Apt Elev	1774

RNAV (GPS) RWY 19

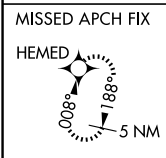
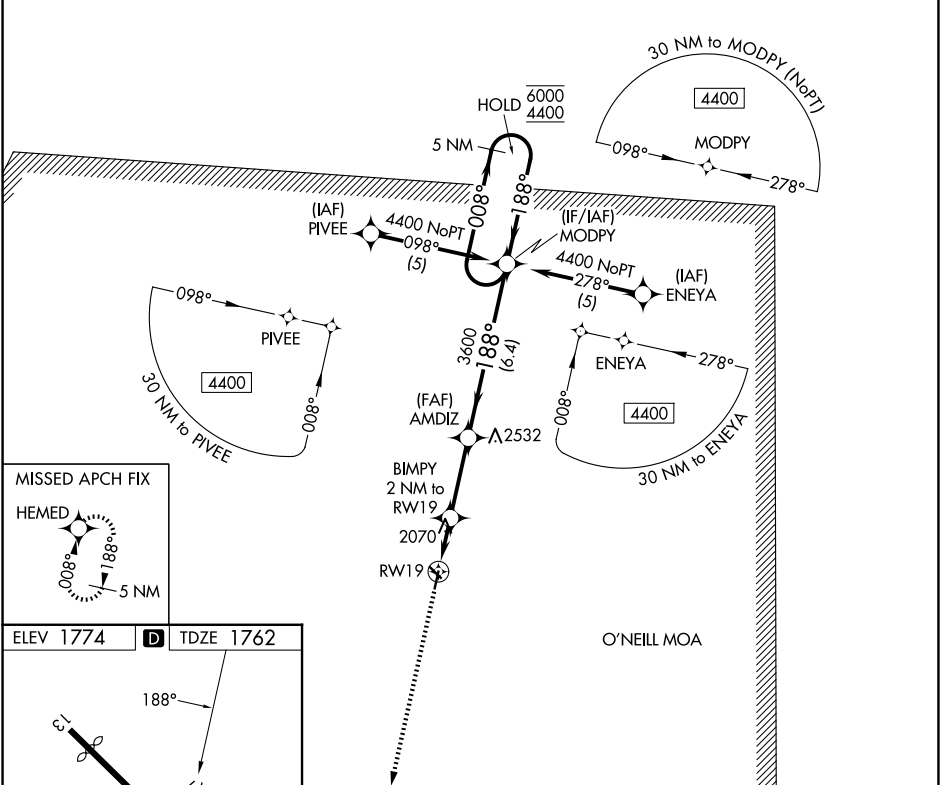
ANTELOPE COUNTY (4V9)

RNP APCH - GPS.

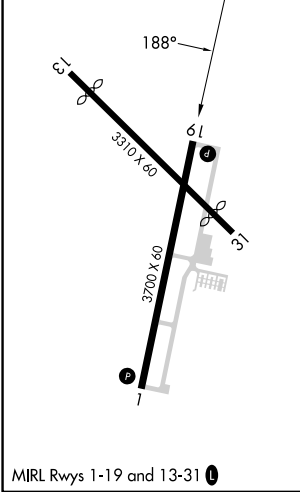
⚠ Circling to Rwy 13, 31 NA at night. Rwy 19 helicopter visibility reduction below 3/4 SM NA. When local altimeter setting not received, use BVN altimeter setting and increase all MDAs 60 feet.

⚠ MISSED APPROACH: Climb to 4400 direct HEMED and hold.

AWOS-3PT 119.275	MINNEAPOLIS CENTER 128.0 257.95	UNICOM 122.8 (CTAF) 0
----------------------------	-------------------------------------------	---------------------------------



ELEV 1774	D	TDZE 1762
-----------	----------	-----------



MIRL Rwy 1-19 and 13-31 0

4400	HEMED	Visual Segment - Obstacles.			
		AMDIZ	MODPY	5 NM Holding Pattern	
		BIMPY 2 NM to RW19	AMDIZ	MODPY	5 NM Holding Pattern
		2500	3600	6000	4400
		2 NM	3 NM	6.4 NM	
CATEGORY	A	B	C	D	
LNAV MDA	2320-1	558 (600-1)	NA		
CIRCLING	2320-1 546 (600-1)	2380-1 606 (700-1)	NA		

NC-2, 14 MAY 2026 to 11 JUN 2026

NC-2, 14 MAY 2026 to 11 JUN 2026