

WAAS CH 99538 W34A	APP CRS 327°	Rwy Ldg TDZE Apt Elev	2901 35 35
--	------------------------	-----------------------------	---------------------------------------

RNAV (GPS) RWY 34

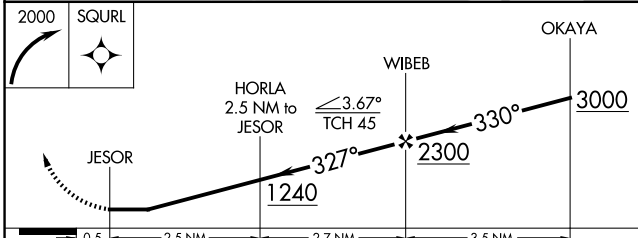
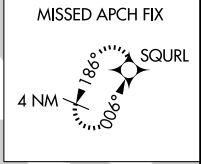
ORCAS ISLAND (ORS)

RNP APCH - GPS.

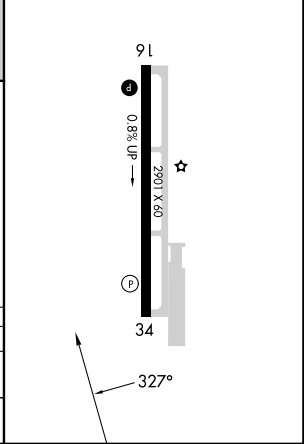
⚠ Rwy 34 helicopter visibility reduction below 1 SM NA. Straight-in Rwy 34 NA at night, Circling Rwy 34 NA at night. When local altimeter setting not received, use FHR altimeter setting and increase all MDAs 40 feet and LP Cat B visibility ¼ mile.

MISSED APPROACH: Climbing right turn to 2000 direct SQURL and hold.

AWOS-3P 135.425	WHIDBEY APP CON 118.2 285.65 (S)	VICTORIA APP CON 132.7 (N)	CTAF 128.25
---------------------------	--	--------------------------------------	-----------------------



ELEV 35	TDZE 35
MIRL Rwy 16-34	REIL Rwy 16 and 34



CATEGORY	A	B	C	D
LP MDA	760-1	725 (800-1)		NA
CIRCLING	1060-1¼ 1025 (1100-1¼)	1840-1½ 1805 (1900-1½)		NA

NW-1, 14 MAY 2026 to 11 JUN 2026

NW-1, 14 MAY 2026 to 11 JUN 2026