

WAAAS CH <b>93632</b> <b>W10A</b>	APP CRS <b>100°</b>	Rwy Ldg TDZE Apt Elev	<b>4549</b> <b>928</b> <b>928</b>
---	------------------------	-----------------------------	---

# RNAV (GPS) RWY 10

BOGGS FLD (USW)

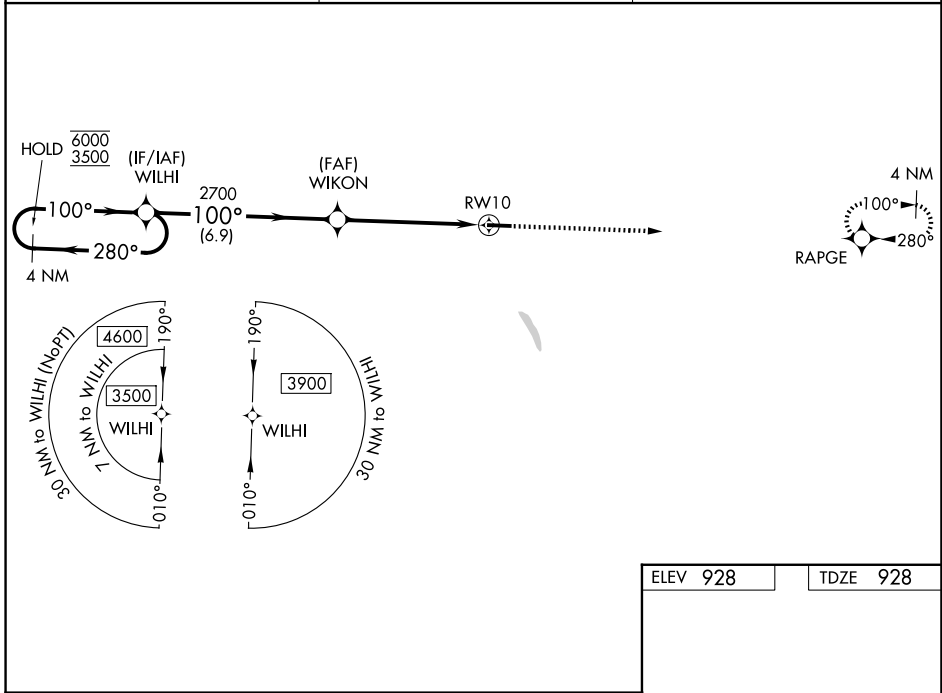
RNP APCH.

**▼** Circling Rwy 28 NA at night. Baro-VNAV and VDP NA when using Charleston altimeter setting. Rwy 10 helicopter visibility reduction below 3/4 SM NA. For uncompensated Baro-VNAV systems, LNAV/VNAV NA below -16°C or above 54°C. When local altimeter setting not received, use Charleston altimeter setting, increase LPV DA to 1247 feet, LNAV/VNAV DA to 1730 feet, and LNAV/VNAV visibility all Cats by 1/2 SM; increase all MDAs 80 feet and LNAV visibility Cat B 1/4 SM and Cat C and D 1/2 SM, and Circling visibility Cats C and D by 1/4 SM.

**▲ NA**

**MISSED APPROACH:**  
Climb to 3200 direct RAPGE and hold.

AWOS-3 <b>118.575</b>	CHARLESTON APP CON <b>124.1 269.125</b>	UNICOM <b>122.725 (CTAF) 0</b>
--------------------------	--	-----------------------------------



NE-4, 14 MAY 2026 to 11 JUN 2026

NE-4, 14 MAY 2026 to 11 JUN 2026

ELEV 928	TDZE 928
----------	----------

4 NM Holding Pattern WILHI

6000 ← 280°  
3500 ← 100° →

GP 3.00°  
TCH 40

WILHI

WIKON

2700

3200 RAPGE

\* 2 NM to RWY 10

\* LNAV only.

4549 X.75

100°

6.9 NM 3.4 NM 2 NM

CATEGORY	A	B	C	D
LPV DA	1178-1 250 (300-1)			
LNAV/VNAV DA	1661-2 733 (800-2)			
LNAV MDA	1620-1	692 (700-1)	1620-2	692 (700-2)
CIRCLING	1620-1 692 (700-1)	1760-1 1/4 832 (900-1 1/4)	1760-2 1/2 832 (900-2 1/2)	1760-2 3/4 832 (900-2 3/4)

MIRL Rwy 10-28 0