

WAAS CH 42824 W05A	APP CRS 045°	Rwy Ldg TDZE Apt Elev	5002 411 412
--	------------------------	-----------------------------	---

RNAV (GPS) RWY 5
HANCOCK COUNTY/RON LEWIS FLD (KY8)

RNP APCH.

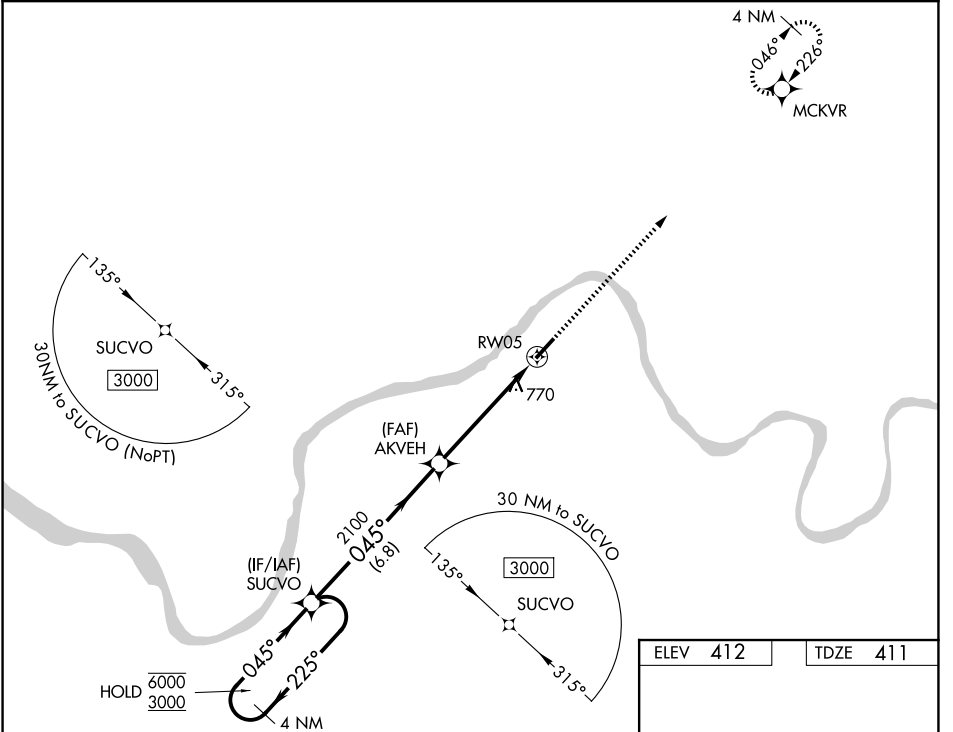
▼ Rwy 5 helicopter visibility reduction below ¼ SM NA. When local altimeter setting not received, use Owensboro altimeter setting and increase all MDAs 60 feet; increase LP and LNAV Cat C visibility ⅛ SM and Circling Cat C visibility ¼ SM.

MISSED APPROACH:
Climb to 3000 direct MCKVR and hold.

AWOS-3
119.775

EVANSVILLE APP CON ★
124.025 290.9

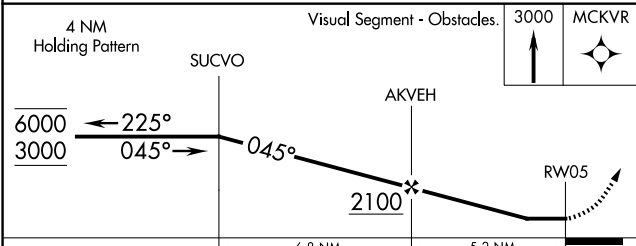
UNICOM
123.0 (CTAF) 0



SE-1, 14 MAY 2026 to 11 JUN 2026

SE-1, 14 MAY 2026 to 11 JUN 2026

ELEV 412	TDZE 411
----------	----------



CATEGORY	A	B	C	D
LP MDA	1020-1	609 (700-1)	1020-1¾ 609 (700-1¾)	NA
LNAV MDA	1020-1	609 (700-1)	1020-1¾ 609 (700-1¾)	NA
CIRCLING	1020-1 608 (700-1)	1080-1 668 (700-1)	1080-1¾ 668 (700-1¾)	NA

