

APP CRS	Rwy Ldg	<b>3189</b>
<b>015°</b>	TDZE	<b>539</b>
	Apt Elev	<b>539</b>

# RNAV (GPS) RWY 1

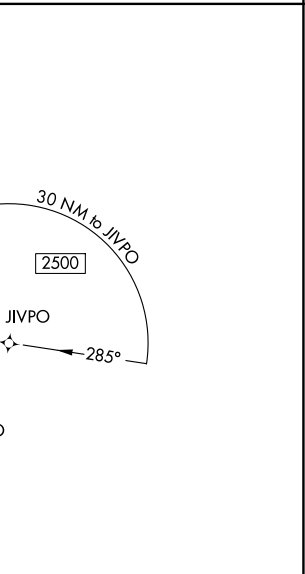
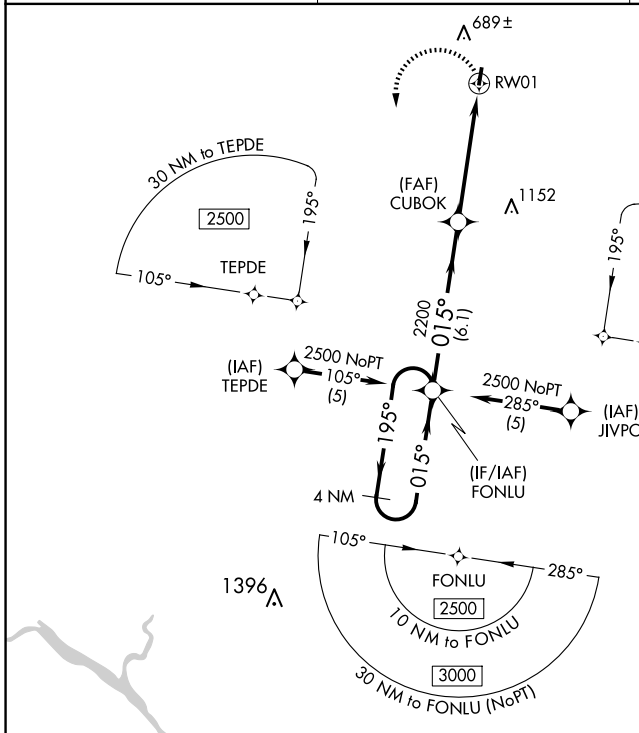
SALUDA COUNTY (6J4)

RNP APCH.

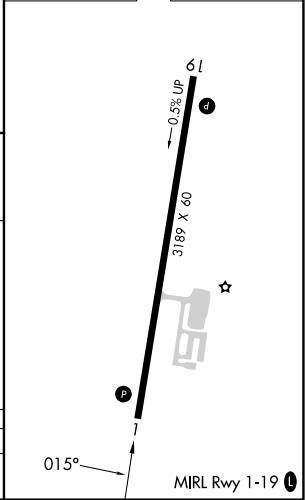
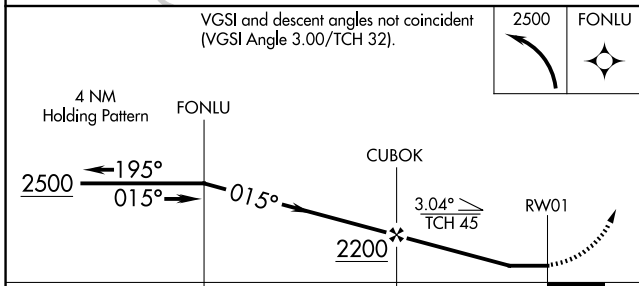
**⚠** Procedure NA at night. Rwy 1 helicopter visibility reduction below 1 SM NA. Use Aiken altimeter setting; when not received, use Augusta Rgnl at Bush Fld altimeter setting and increase all MDA 100 feet and increase LNAV Cat C visibility ¼ SM.

**MISSED APPROACH:**  
Climbing left turn to 2500 direct FONLU and hold.

AIK AWOS-3PT <b>118.025</b>	AUGUSTA APP CON ★ <b>119.15</b>	CTAF <b>122.9</b>
--------------------------------	------------------------------------	----------------------



ELEV 539	TDZE 539
----------	----------



CATEGORY	A	B	C	D
LNAV MDA	1160-1	621 (700-1)	1160-1¼ 621 (700-1¼)	NA

SE-2, 14 MAY 2026 to 11 JUN 2026

SE-2, 14 MAY 2026 to 11 JUN 2026