

WAAS CH 69447 W08A	APP CRS 083°	Rwy Ldg TDZE Apt Elev	5330 5152 5152
--	------------------------	-----------------------------	---

RNAV (GPS) RWY 8

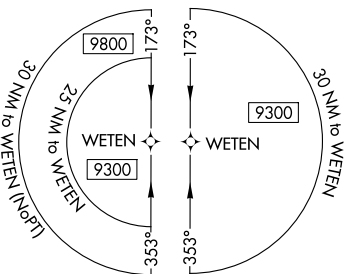
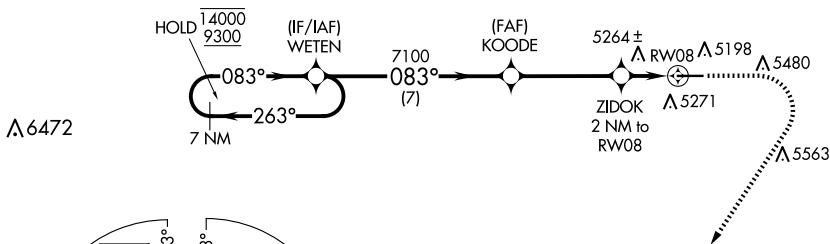
PINE BLUFFS MUNI (82V)

RNP APCH - GPS.

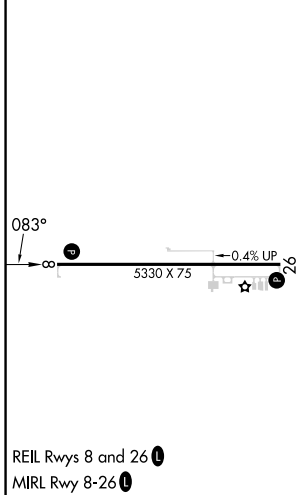
⚠ For uncompensated Baro-VNAV systems, LNAV/VNAV NA below -22°C or above 54°C. Procedure NA at night.

MISSED APPROACH: Climb to 5800 then climbing right turn to 9300 direct SHOOP and hold, continue climb-in-hold to 9300.

AWOS-3PT 132.425	DENVER CENTER 125.9 284.7	UNICOM 122.8 (CTAF) 0
----------------------------	-------------------------------------	---------------------------------



ELEV 5152	TDZE 5152
-----------	-----------



CATEGORY	VGSIs and RNAV glidepaths not coincident (VGSIs Angle 3.00/TCH 25).			
	A	B	C	D
LPV DA	5402-1 250 (300-1)			NA
LNAV/VNAV DA	5531-1 379 (400-1)			NA
LNAV MDA	5520-1 368 (400-1)			NA
CIRCLING	5620-1 468 (500-1)	5680-1 528 (600-1)	5780-1¾ 628 (700-1¾)	NA

NW-1, 14 MAY 2026 to 11 JUN 2026

NW-1, 14 MAY 2026 to 11 JUN 2026