

WAAS CH <b>63036</b> <b>W12A</b>	APP CRS <b>123°</b>	Rwy Ldg TDZE Apt Elev	<b>3402</b> <b>2677</b> <b>2677</b>
--	------------------------	-----------------------------	---

# RNAV (GPS) RWY 12

CURTIS MUNI (47V)

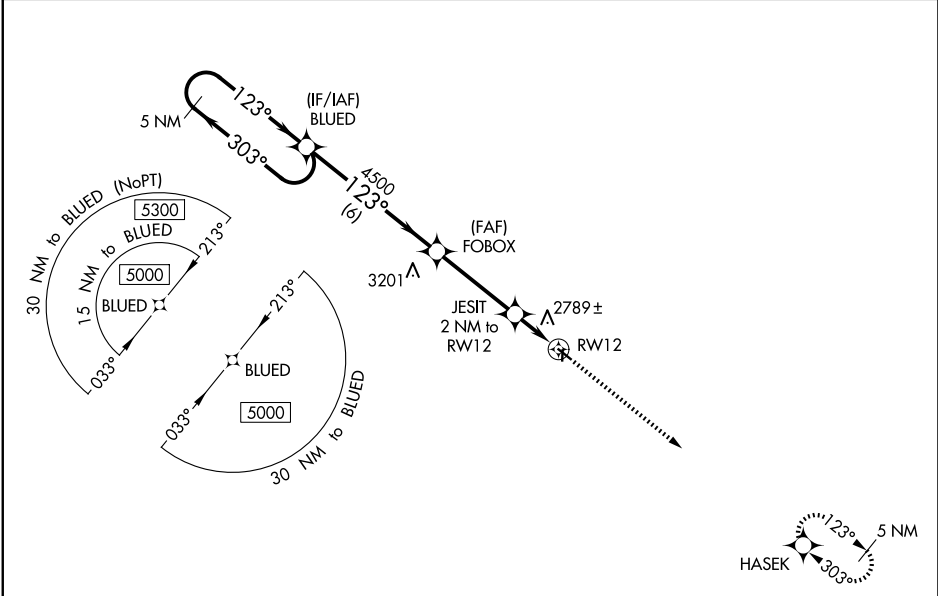
**Baro-VNAV NA.** Use Mc Cook altimeter setting; when not received, use North Platte altimeter setting and increase all DA 10 feet and all MDA 20 feet, and increase LNAV/VNAV Cat A and B visibility to 1 1/4 mile. DME/DME RNP-0.3 NA. Helicopter visibility reduction below 3/4 SM NA. Night landing: Rwy 17, 35 NA.

**MISSED APPROACH:** Climb to 5000 direct HASEK and hold.

MCK ASOS  
**119.025**

DENVER CENTER  
**132.7 226.675**

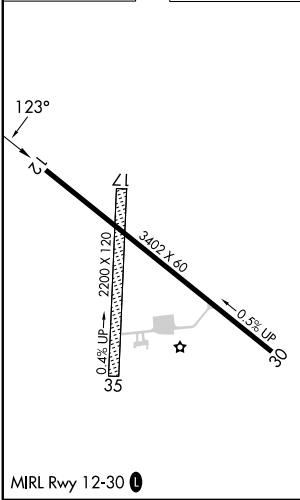
CTAF  
**122.9**



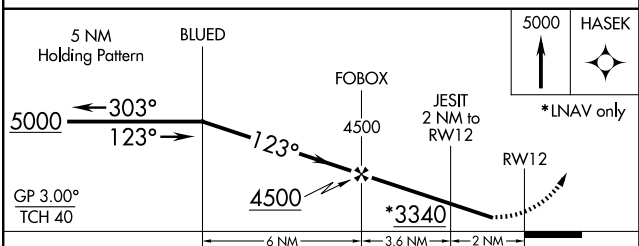
NC-2, 14 MAY 2026 to 11 JUN 2026

NC-2, 14 MAY 2026 to 11 JUN 2026

ELEV 2677 TDZE 2677



MIRL Rwy 12-30



CATEGORY	A	B	C	D
LPV DA	3002-1 1/8	325 (400-1 1/8)		NA
LNAV/VNAV DA	3026-1 1/8	349 (400-1 1/8)		NA
LNAV MDA	3120-1	443 (500-1)		NA
CIRCLING	3200-1 523 (600-1)	3380-1 703 (800-1)		NA