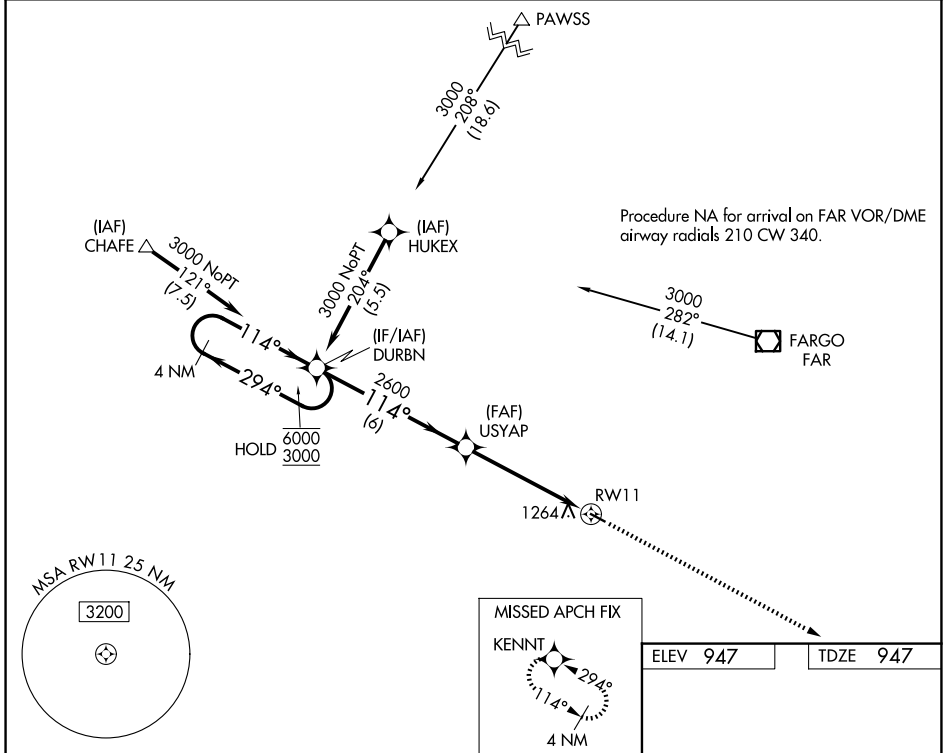


WAAS CH 97733 W11A	APP CRS 114°	Rwy Ldg TDZE Apt Elev	3300 947 947
--	------------------------	-----------------------------	---

RNAV (GPS) RWY 11

ROBERT ODEGAARD FLD (K74)

RNP APCH-GPS.		MISSED APPROACH: Climb to 3000 direct KENNT and hold.
<p>▼ Rwy 11 helicopter visibility reduction below 3/4 SM NA. Use Fargo altimeter setting; when not received, use Moorhead altimeter setting.</p> <p>▲ NA</p>		
FAR ASOS 124.5 379.2	FARGO APP CON 120.4 377.15	CTAF 122.90



NC-1, 14 MAY 2026 to 11 JUN 2026

NC-1, 14 MAY 2026 to 11 JUN 2026

<p>4 NM Holding Pattern</p> <p>6000 ← 294°</p> <p>3000 → 114°</p>		<p>VGSI and descent angles not coincident (VGSI Angle 3.00/TCH 25).</p> <p>3000 ↑ KENNT</p>		<p>ELEV 947</p> <p>TDZE 947</p>	
<p>DURBN</p> <p>6 NM</p>		<p>USYAP</p> <p>5.1 NM</p>		<p>RWY 11</p> <p>3300 X 60</p>	
CATEGORY	A	B	C	D	
LP MDA	1440-1	493 (500-1)		NA	
LNAV MDA	1620-1	673 (700-1)		NA	
CIRCLING	1680-1	733 (800-1)		NA	