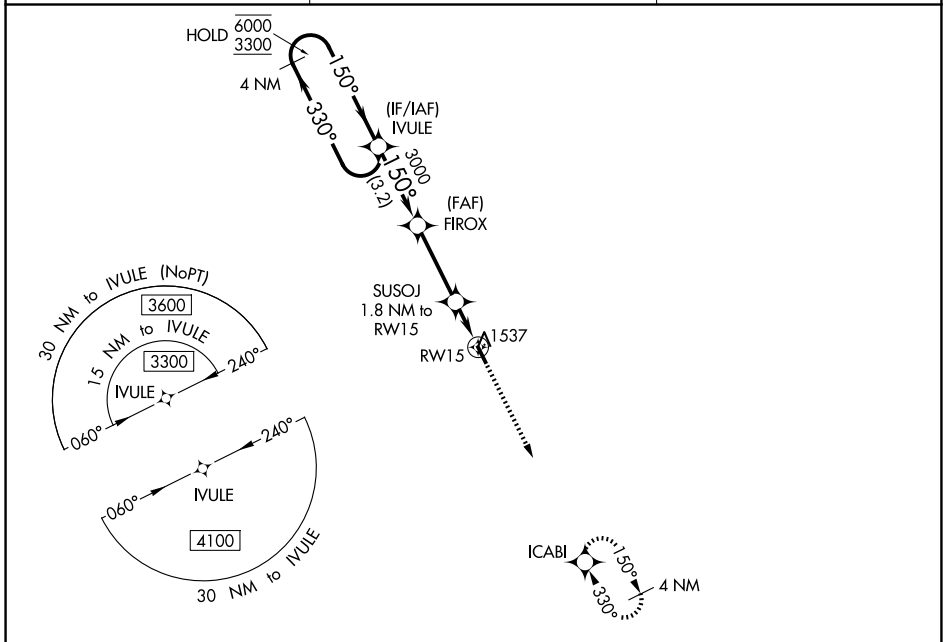


APP CRS	Rwy Ldg	3600
150°	TDZE	1417
	Apt Elev	1418

RNAV (GPS) RWY 15

PARKSTON MUNI (8V3)

RNP APCH - GPS		MISSED APPROACH: Climb to 3300 direct ICABI and hold.
	Rwy 15 helicopter visibility reduction below 3/4 SM AN. Use MHE altimeter setting; when not received, use YKN altimeter setting and increase all MDAs 40 feet.	
MHE ASOS 124.175	MINNEAPOLIS CENTER 128.0 257.95	AUNICOM 122.9 (CTAF)



NC-1, 14 MAY 2026 to 11 JUN 2026

NC-1, 14 MAY 2026 to 11 JUN 2026

ELEV 1418		TDZE 1417	
-----------	--	-----------	--

CATEGORY	A	B	C	D
LNAV MDA	1860-1	443 (500-1)	NA	
CIRCLING	1980-1 562 (600-1)	2080-1 662 (700-1)	NA	

MIRL Rwy 15-33