

WAAS CH 56635 W36A	APP CRS 002°	Rwy Ldg TDZE Apt Elev	4000 936 936
--	------------------------	-----------------------------	---

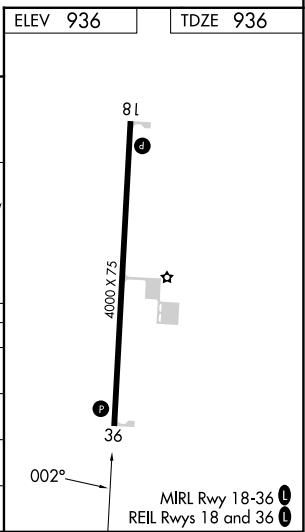
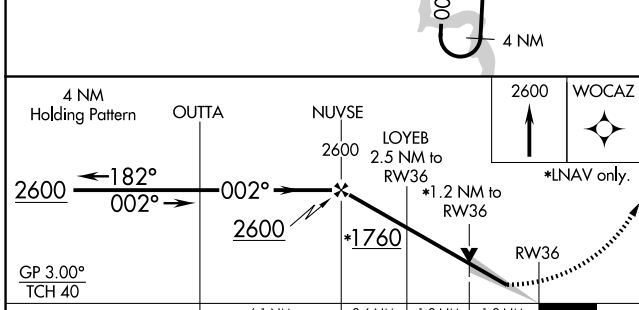
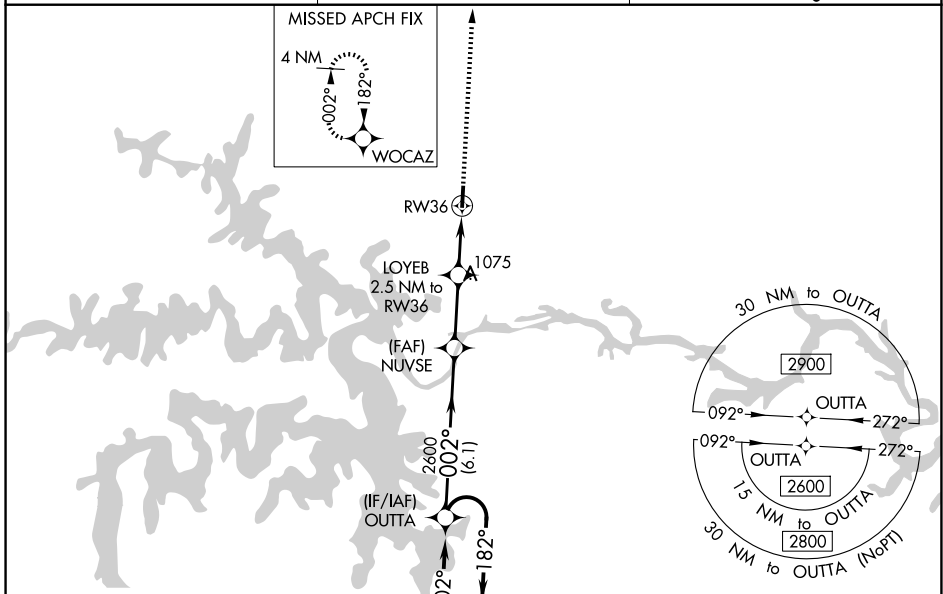
RNAV (GPS) RWY 36

WARSAW MUNI (R.A.W)

NA Baro-VNAV and VDP NA when using Clinton altimeter setting. For uncompensated Baro-VNAV systems, LNAV/VNAV NA below -16°C (4°F) or above 54°C (130°F). DME/DME RNP-0.3 NA. Helicopter visibility reduction below 1 SM NA. When local altimeter not received, use Clinton altimeter setting and increase all DA 53 feet and all MDA 60 feet. Increase LNAV/VNAV all Cats visibility to 1½ mile, LNAV Cats C/D visibility to 1¾ mile and Circling Cat C visibility to 2 and Cat D visibility to 2¼ mile.

MISSED APPROACH:
Climb to 2600 direct WOCAZ and hold.

AWOS-3PT 118.325	WHITEMAN APP CON * 127.45 284.0	CTAF 122.9 0
----------------------------	---	------------------------



CATEGORY	A	B	C	D
LPV DA		1136-1	200 (200-1)	
LNAV/VNAV DA		1215-1	279 (300-1)	
LNAV MDA	1340-1	404 (500-1)	1340-1 1/8	404 (500-1 1/8)
CIRCLING	1340-1 404 (500-1)	1400-1 464 (500-1)	1580-1 3/4 644 (700-1 3/4)	1580-2 644 (700-2)

NC-3, 14 MAY 2026 to 11 JUN 2026

NC-3, 14 MAY 2026 to 11 JUN 2026

MIRL Rwy 18-36
REIL Rwys 18 and 36