

WAAS CH 40232 W36A	APP CRS 356°	Rwy Ldg TDZE Apt Elev	5000 1999 1999
--	------------------------	-----------------------------	---

RNAV (GPS) RWY 36

ROOKS COUNTY RGNL (RCP)

RNP APCH - GPS.

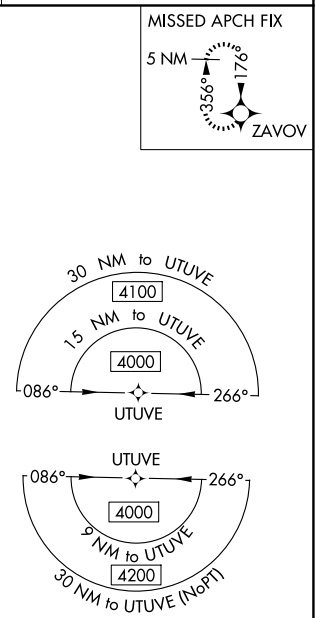
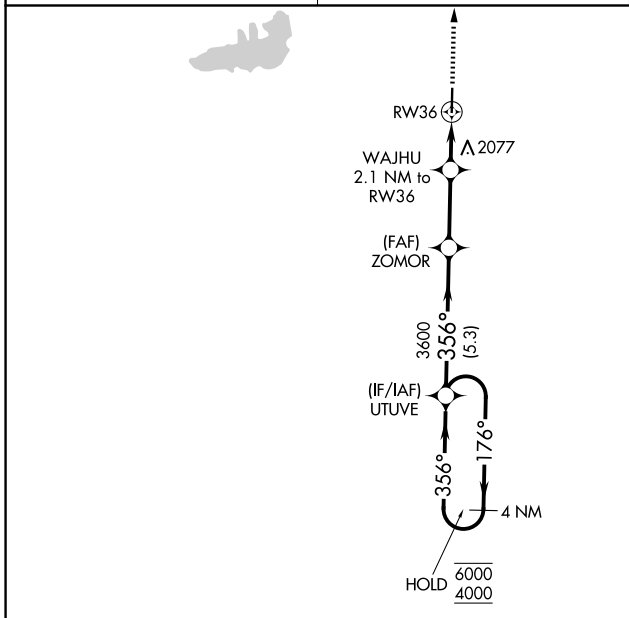
⚠ Circling NA west of Rwy 18-36. For uncompensated Baro-VNAV systems, LNAV/VNAV NA below -18°C or above 54°C.

MISSED APPROACH: Climb to 6000 direct ZAVOV and hold, continue climb-in-hold to 6000.

AWOS-3PT
120.075

DENVER CENTER
132.7 226.675

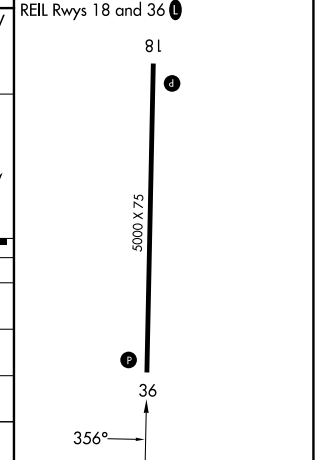
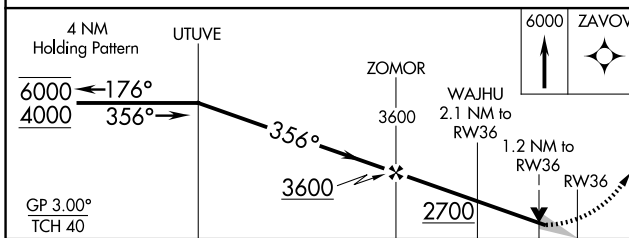
CTAF
122.9



ELEV 1999 **D** TDZE 1999

MIRL Rwy 18-36 **Ⓛ**

REIL Rwys 18 and 36 **Ⓛ**



CATEGORY	A	B	C	D
LPV DA	2290-1 291 (300-1)			NA
LNAV/ VNAV DA	2340-1 341 (400-1)			NA
LNAV MDA	2420-1 421 (500-1)	2420-1¼ 421 (500-1¼)		NA
CIRCLING	2460-1 461 (500-1)	2480-1 481 (500-1)	2500-1½ 501 (600-1½)	NA

NC-2, 14 MAY 2026 to 11 JUN 2026

NC-2, 14 MAY 2026 to 11 JUN 2026