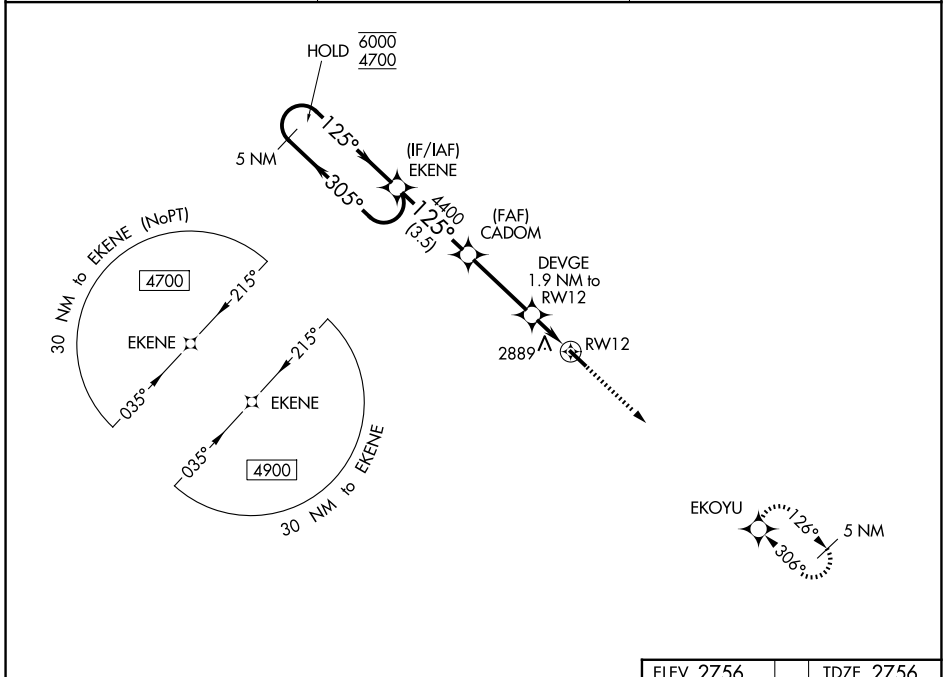


|  |                        |                             |   |
|--|------------------------|-----------------------------|---|
| WAAS<br>CH <b>61338</b><br><b>W12A</b> | APP CRS<br><b>125°</b> | Rwy Ldg<br>TDZE<br>Apt Elev | <b>4200</b><br><b>2756</b><br><b>2756</b> |
|--|------------------------|-----------------------------|---|

# RNAV (GPS) RWY 12

BEACH (20U)

|   |   |   |
|---|---|---|
| RNP APCH.<br>▼ For uncompensated Baro-VNAV systems, LNAV/VNAV NA below -20°C or above 54°C. |   | MISSED APPROACH: Climb to 5000 direct EKOYU and hold. |
| AWOS-3<br><b>118.175</b>  | SALT LAKE CENTER<br><b>126.85 305.2</b> | UNICOM<br><b>122.8 (CTAF) 0</b>                       |



NC-1, 14 MAY 2026 to 11 JUN 2026

NC-1, 14 MAY 2026 to 11 JUN 2026

|  |                       |  |   |   |       |
|--|-----------------------|--|---|---|-------|
| 5 NM Holding Pattern   |                       | VGS1 and RNAV glidepath not coincident (VGS1 Angle 3.00/TCH 26).                           |   | 5000  | EKOYU |
| <p>6000 ← 305°</p> <p>4700 → 125°</p> <p>GP 3.00° TCH 40</p> |                       | <p>CADOM</p> <p>4400</p> <p>DEVGE 1.9 NM to RW12</p> <p>* 1.1 NM to RW12</p> <p>* 3400</p> |   | <p>* LNAV only</p> <p>125°</p> <p>4200 X 50</p> |       |
| ← 3.5 NM   |                       | ← 3.1 NM   |   | ← 0.8 NM  |       |
| ← 1.1 NM   |                       | ← 1.1 NM   |   | ← 1.1 NM  |       |
| CATEGORY   | A                     | B  | C | D   |       |
| LPV DA   | 3006-1                | 250 (300-1)  |   | NA  |       |
| LNAV/VNAV DA   | 3051-1                | 295 (300-1)  |   | NA  |       |
| LNAV MDA   | 3140-1                | 384 (400-1)  |   | NA  |       |
| CIRCLING   | 3280-1<br>524 (600-1) | 3360-1<br>604 (700-1)  |   | NA  |       |

MIRL Rwy 12-30 0