

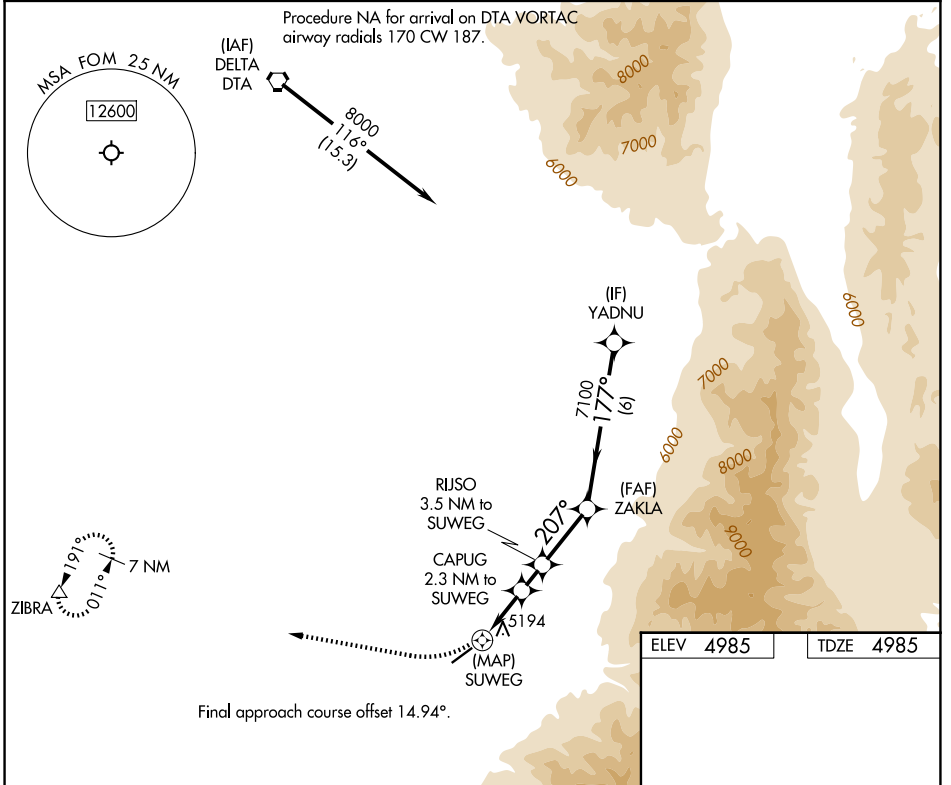
APP CRS	Rwy Ldg	5040
207°	TDZE	4985
	Apt Elev	4985

RNAV (GPS) RWY 22

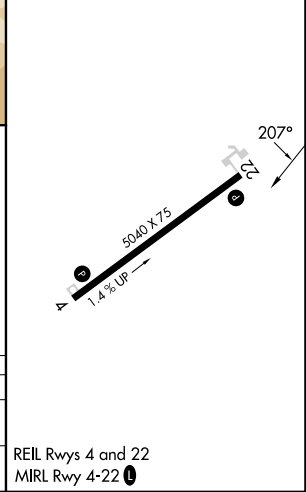
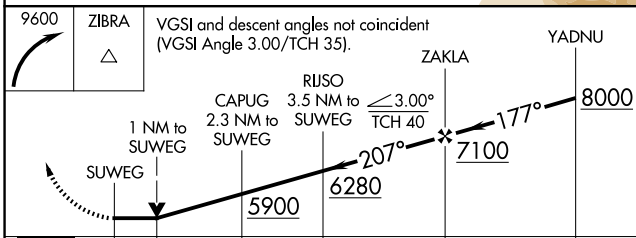
FILLMORE MUNI (FOM)

RNP APCH.	MISSED APPROACH: Climbing right turn to 9600 direct ZIBRA and hold, continue climb-in-hold to 9600.
	Rwy 22 helicopter visibility reduction below 3/4 SM NA.

AWOS-3PT 133.775	SALT LAKE CITY CENTER 125.575 379.275	UNICOM 122.8 (CTAF) 0
----------------------------	---	---------------------------------



ELEV 4985	TDZE 4985
-----------	-----------



CATEGORY	A	B	C	D
LNVA MDA	5500-1 515 (600-1)		5500-1 515 (600-1 3/8)	NA
CIRCLING	5620-1 635 (700-1)		6200-3 1215 (1300-3)	NA

SW-4, 14 MAY 2026 to 11 JUN 2026

SW-4, 14 MAY 2026 to 11 JUN 2026