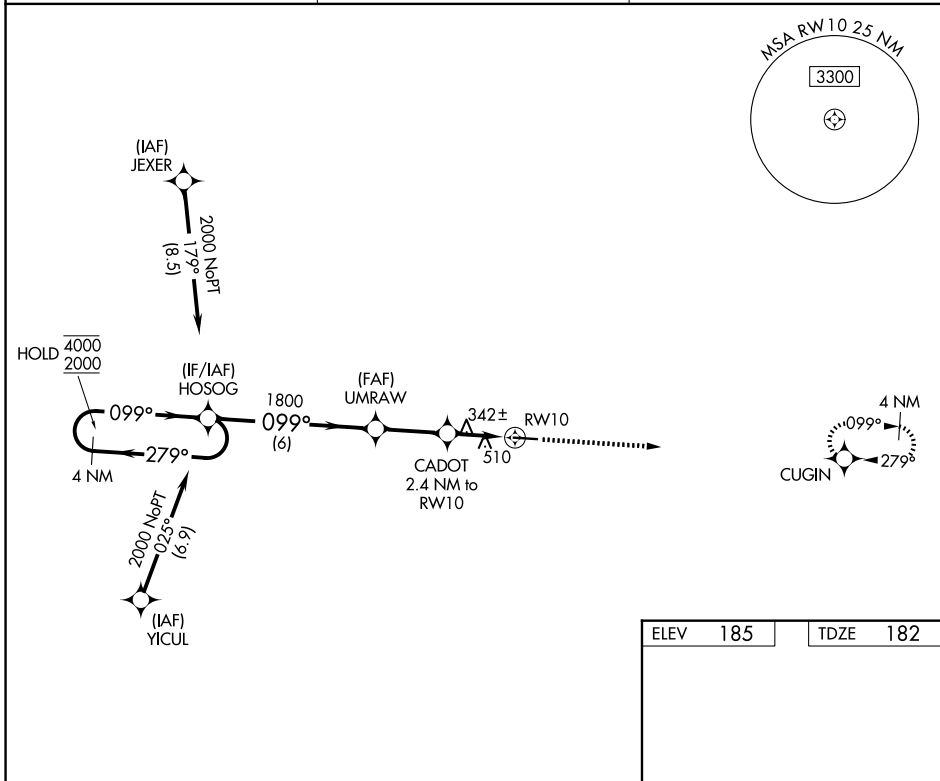


WAAS CH 42734 W10A	APP CRS 099°	Rwy Ldg TDZE Apt Elev	4760 182 185
--	------------------------	-----------------------------	---

RNAV (GPS) RWY 10

QUITMAN BROOKS COUNTY (4J5)

RNP APCH - GPS.		MISSED APPROACH: Climb to 2000 direct CUGIN and hold.
<p>▼ Rwy 10 helicopter visibility reduction below 1 SM NA. Procedure NA at night. Use VLD altimeter setting; when not received, use TVI altimeter setting and increase all MDAs 20 feet and LNAV Cat C visibility 1/8 SM.</p> <p>▲ NA</p>		
VLD ASOS 126.225	VALDOSTA APP CON★ 126.6	CTAF 122.9 0



SE-4, 14 MAY 2026 to 11 JUN 2026

SE-4, 14 MAY 2026 to 11 JUN 2026

4 NM Holding Pattern		Visual Segment - Obstacles.		2000	CUGIN
				↑	
<p>4000 ← 279°</p> <p>2000 → 099°</p>		<p>HOSOG</p> <p>UMRAW</p> <p>CADOT 2.4 NM to RWY 10</p> <p>RWY 10</p>		099°	0.3% UP
<p>6 NM</p> <p>2.6 NM</p> <p>2.4 NM</p>		<p>5000 X 76</p>		28	
CATEGORY	A	B	C	D	
LP MDA	640-1	458 (500-1)	640-1 ³ / ₈ 458 (500-1 ³ / ₈)	NA	
LNAV MDA	820-1	638 (700-1)	820-1 ³ / ₄ 638 (700-1 ³ / ₄)	NA	

MIRL Rwy 10-28 0