

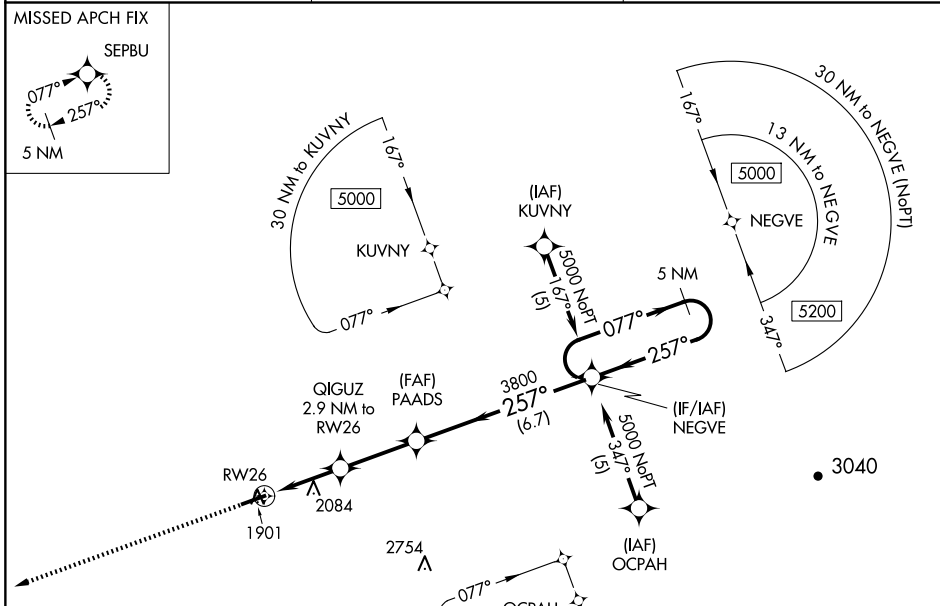
APP CRS <b>257°</b>	Rwy Idg <b>5001</b>
	TDZE <b>1883</b>
	Apt Elev <b>1883</b>

# RNAV (GPS) RWY 26

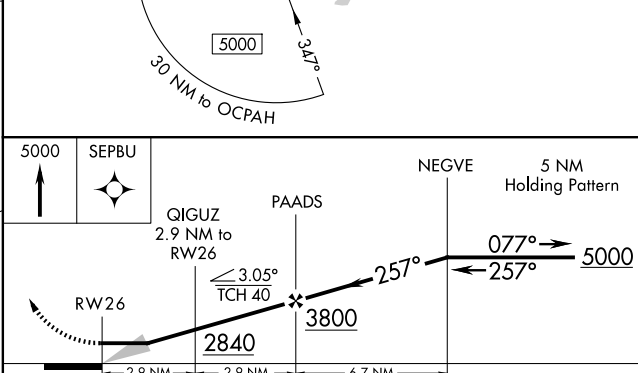
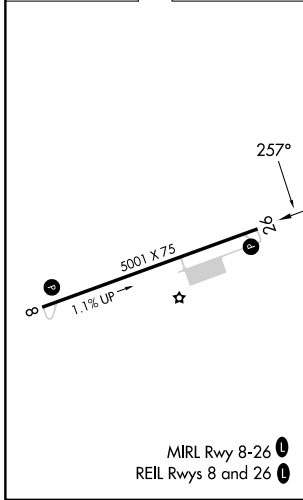
SOUTHERN WEST VIRGINIA RGNL (E,B,D)

RNP APCH - GPS.	MISSED APPROACH: Climb to 5000 direct SEPBU and hold.
<p>▼ Obtain local altimeter setting on CTAF; when not received, use Beckley altimeter setting: increase all MDAs 140 feet and visibility LNAV Cat A and Circling Cat A/B ¼ SM and Circling Cat C ½ SM.</p>	

116 AWOS-3 <b>120.625</b>	INDIANAPOLIS CENTER <b>126.575 257.85</b>	UNICOM <b>122.8 (CTAF) 0</b>
------------------------------	--	---------------------------------



ELEV <b>1883</b>	TDZE <b>1883</b>
------------------	------------------



CATEGORY	A	B	C	D
LNAV MDA	2660-1 777 (800-1)	2660-1¼ 777 (800-1¼)	2660-2½	777 (800-2½)
CIRCLING	2680-1	797 (800-1)	2760-2½ 877 (900-2½)	2900-3 1017 (1100-3)

NE-4, 14 MAY 2026 to 11 JUN 2026

NE-4, 14 MAY 2026 to 11 JUN 2026