

WAAS CH <b>90130</b> <b>W36A</b>	APP CRS <b>002°</b>	Rwy Idg TDZE Apt Elev	<b>4000</b> <b>904</b> <b>917</b>
--	------------------------	-----------------------------	---

# RNAV (GPS) RWY 36

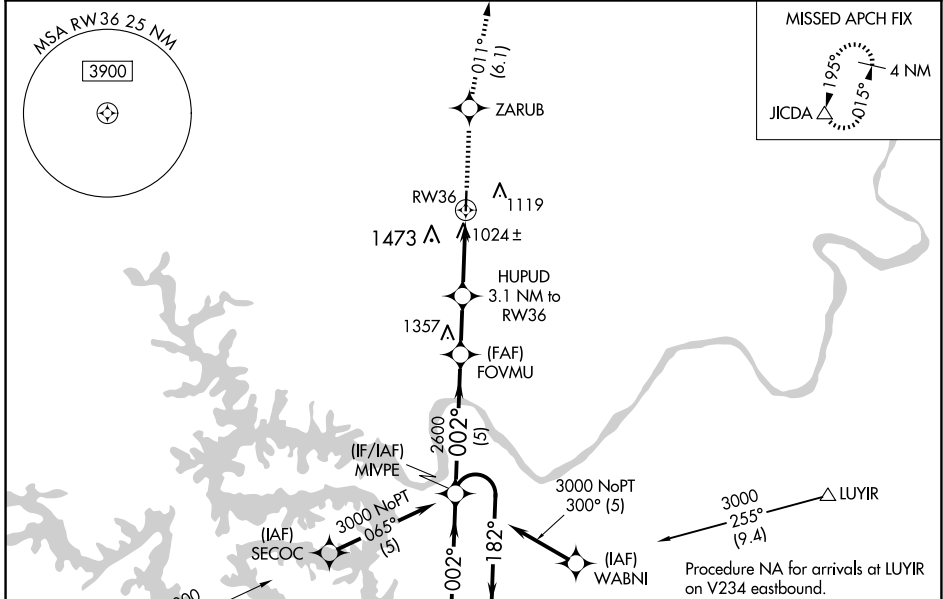
ELDON MODEL AIRPARK (H79)

RNP APCH.

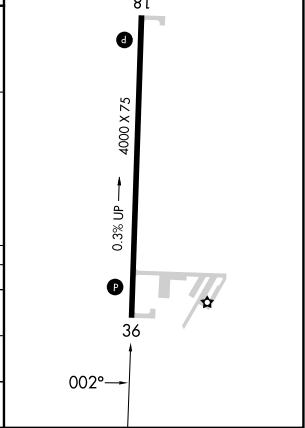
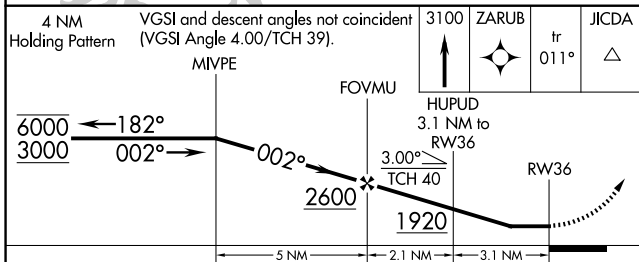
**NA** Rwy 36 helicopter visibility reduction below ¼ SM NA. Use Kaiser/Lake Ozark altimeter setting, when not received use Fort Leonard Wood altimeter setting and increase all MDA 100 feet; increase LP Cat C visibility ½ SM, increase LNAV Cat C and Circling Cats B/C visibility ¼ SM.

MISSED APPROACH: Climb to 3100 direct ZARUB and on track 011° to JICDA and hold.

AIZ AWOS-3PT <b>135.325</b>	MIZZU APP CON <b>124.1 353.925</b>	UNICOM <b>122.8 (CTAF) 0</b>
--------------------------------	---------------------------------------	---------------------------------



ELEV 917	TDZE 904
MIRL Rwy 18-36	
REIL Rws 18 and 36	



CATEGORY	A	B	C	D
LP MDA	1320-1	416 (500-1)	1320-1½ 416 (500-1½)	NA
LNAV MDA	1440-1	536 (600-1)	1440-1½ 536 (600-1½)	NA
CIRCLING	1520-1 603 (700-1)	1820-1¼ 903 (1000-1¼)	1820-2¾ 903 (1000-2¾)	NA

NC-3, 14 MAY 2026 to 11 JUN 2026

NC-3, 14 MAY 2026 to 11 JUN 2026