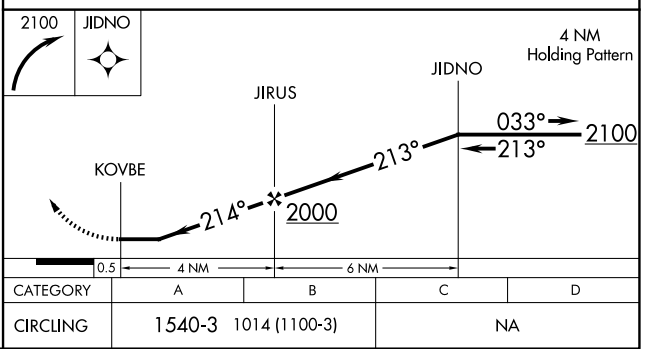
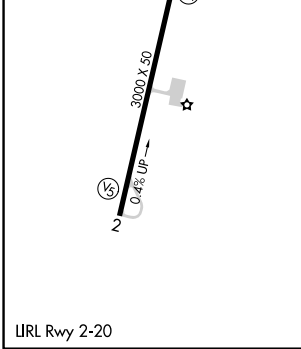
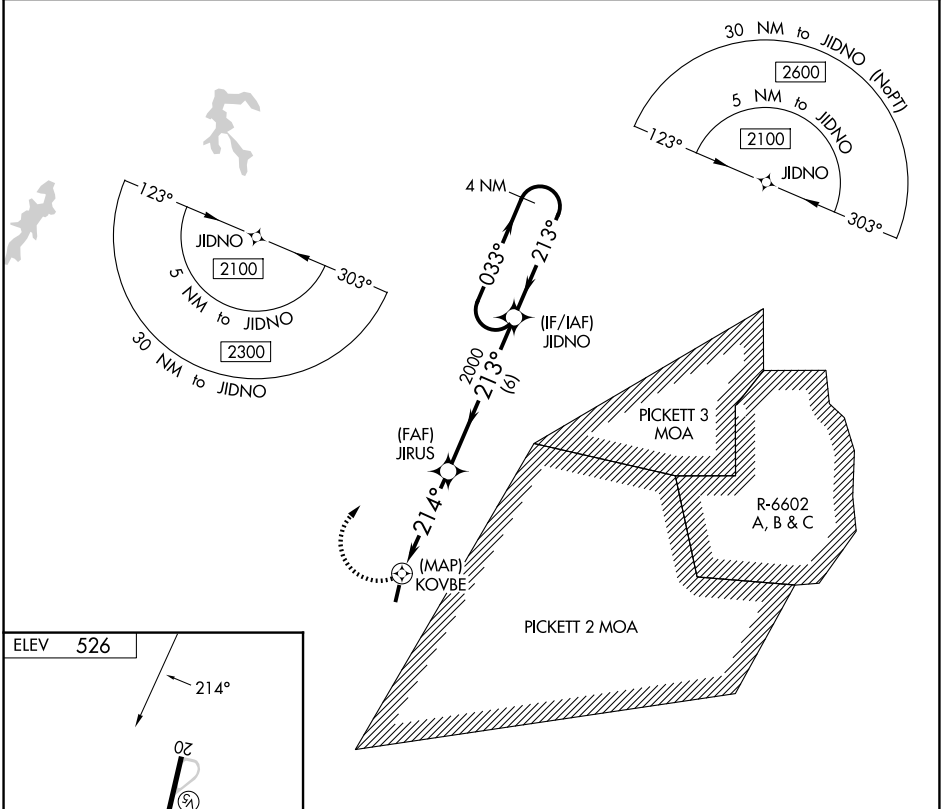


APP CRS 214°	Rwy Ldg TDZE Apt Elev 526	N/A N/A 526
------------------------	---	--

RNAV (GPS)-B

LUNENBURG COUNTY (W31)

<p>⚠ Helicopter visibility reduction below 1 SM NA. DME/DME RNP-0.3 NA. Procedure NA at night. When local altimeter setting not received, use Blackstone altimeter setting and increase all MDA 60 feet.</p>		<p>MISSED APPROACH: Climbing right turn to 2100 direct JIDNO and hold.</p>
<p>AWOS-3 123.875</p>	<p>WASHINGTON CENTER 118.75 377.1</p>	<p>UNICOM 122.7 (CTAF)</p>



KENBRIDGE, VIRGINIA Orig 02MAR17		LUNENBURG COUNTY (W31) RNAV (GPS)-B	
LRL Rwy 2-20		36°58'N-78°11'W	
CATEGORY	A	B	C
CIRCLING	1540-3	1014 (1100-3)	NA

NE-3, 14 MAY 2026 to 11 JUN 2026

NE-3, 14 MAY 2026 to 11 JUN 2026