

WAAS CH 81838 W22A	APP CRS 220°	Rwy Ldg TDZE Apt Elev	2999 1371 1371
--	------------------------	-----------------------------	---

RNAV (GPS) RWY 22

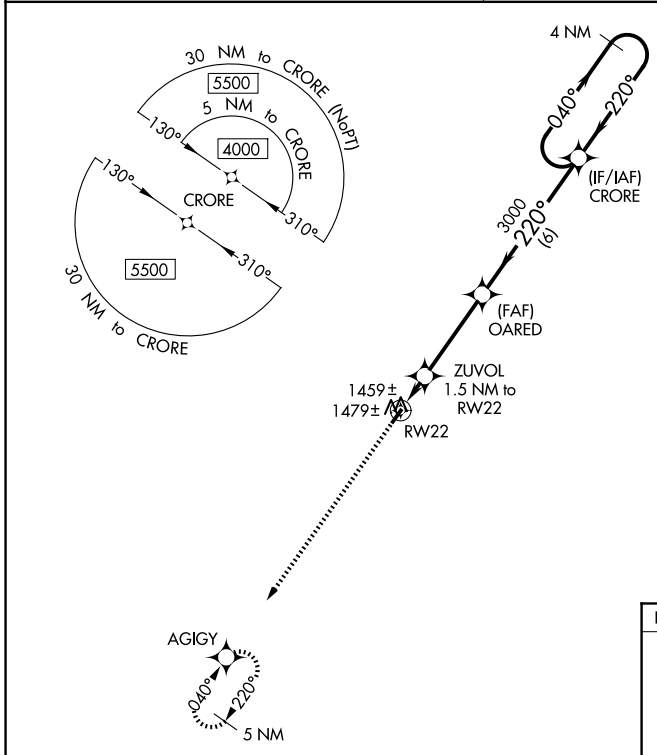
MC CREARY COUNTY (18I)

⚠ NA DME/DME RNP-0.3 NA. Procedure NA at night. Helicopter visibility reduction below 1 SM NA. Use Williamsburg altimeter setting, when not received, use London altimeter setting and increase all MDA 40 feet and LP Cat C visibility 1/8 mile and Circling Cat C visibility 1/4 mile.

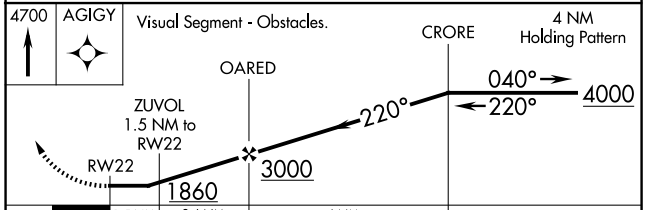
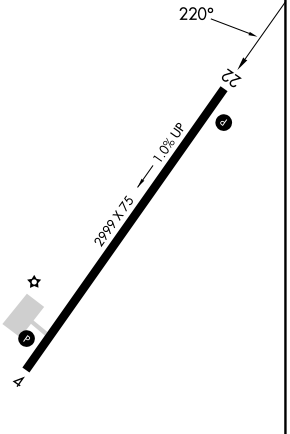
MISSED APPROACH: Climb to 4700 direct AGIGY and hold, continue climb-in-hold to 4700.

INDIANAPOLIS CENTER
124.625 371.925

UNICOM
123.05 (CTAF) 0



ELEV 1371	TDZE 1371
-----------	-----------



CATEGORY	A	B	C	D
LP MDA	1780-1	409 (500-1)	1780-1¼ 409 (500-1¼)	NA
RNAV MDA	1800-1	429 (500-1)	1800-1⅜ 429 (500-1⅜)	NA
CIRCLING	1880-1 509 (600-1)	2000-1 629 (700-1)	2020-1¾ 649 (700-1¾)	NA

MIRL Rwy 4-22 0
REIL Rws 4 and 22 0

SE-1, 14 MAY 2026 to 11 JUN 2026

SE-1, 14 MAY 2026 to 11 JUN 2026