

APP CRS	Rwy Idg	<b>3851</b>
<b>021°</b>	TDZE	<b>2183</b>
	Apt Elev	<b>2183</b>

# RNAV (GPS) RWY 2

WILBUR (2S8)

RNP APCH - GPS.

**▽** Circling Rwy 20 NA at night. When local altimeter setting not received, use EPH altimeter setting and increase all MDAs 240 feet and LNAV visibility Cat C/D 5/8 SM, and Circling visibility Cat B/C/D 3/4 SM. VDP NA with EPH altimeter setting.

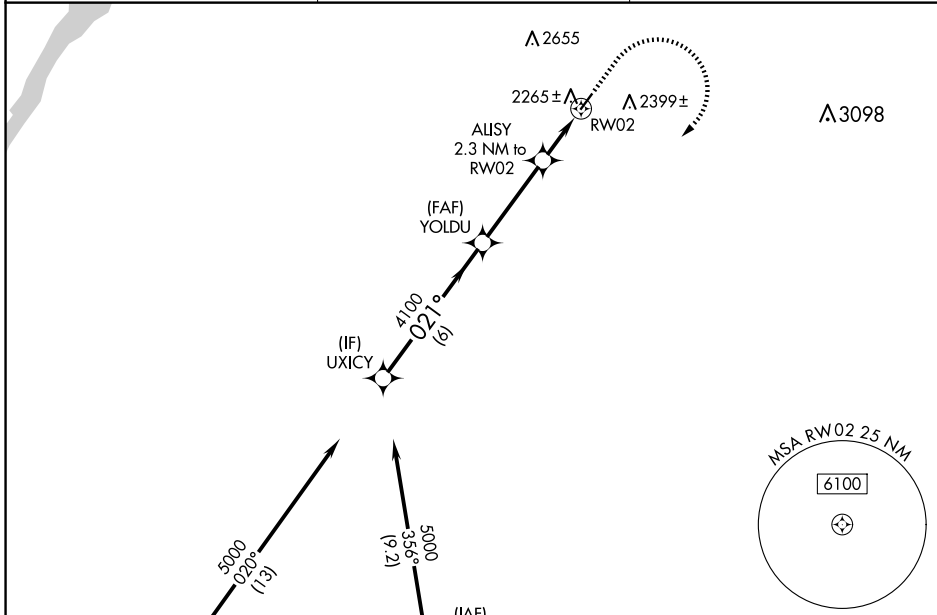
**△** NA

MISSED APPROACH: Climb to 2600, then climbing right turn to 5000 direct WIPES and hold.

AWOS-2  
**124.175**

GRANT COUNTY APP CON \*  
**126.4 379.95**

CTAF  
**122.9 0**

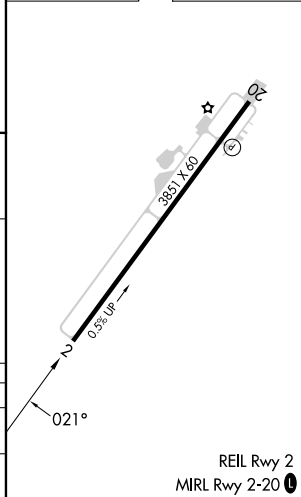


NW-1, 14 MAY 2026 to 11 JUN 2026

NW-1, 14 MAY 2026 to 11 JUN 2026

ELEV 2183      TDZE 2183

	UXICY	YOLDU	ALISY 2.3 NM to RW02	2600	5000	WIPES
	5000	4100	2940	↑	↷	△
	021°	3.00° TCH 40	1 NM to RW02			
	6 NM	3.6 NM	1.3 NM	1 NM		
CATEGORY	A	B	C	D		
LNAV MDA	2520-1 337 (400-1)					
CIRCLING	2660-1 477 (500-1)	2760-1 577 (600-1)	2960-2¼ 777 (800-2¼)	2960-2½ 777 (800-2½)		



REIL Rwy 2  
MIRL Rwy 2-20 0