

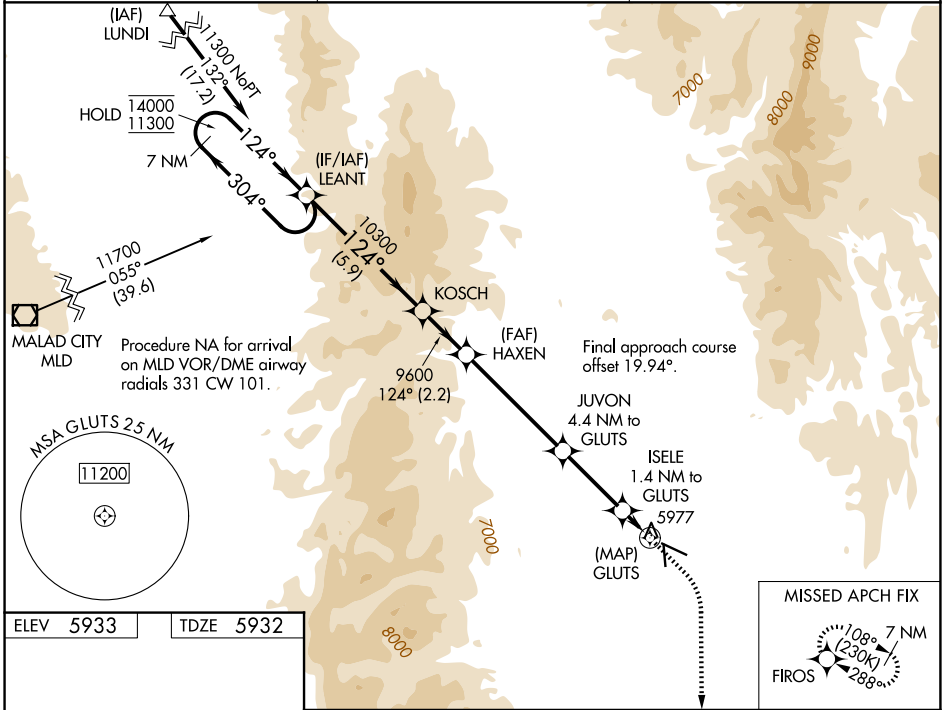
WAAS CH 65742 W10A	APP CRS 124°	Rwy Ldg TDZE Apt Elev	5728 5932 5933
--	------------------------	-----------------------------	---

RNAV (GPS) RWY 10

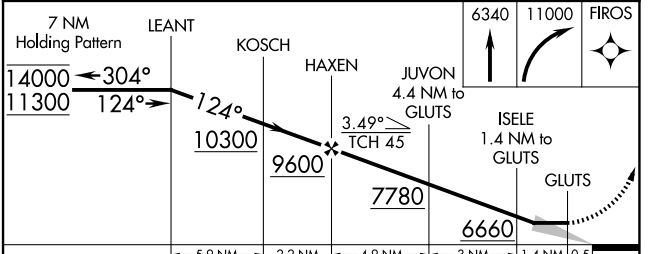
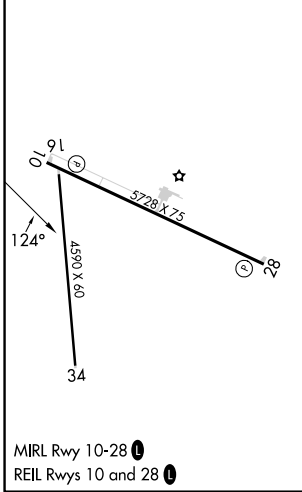
BEAR LAKE COUNTY (1U7)

RNP APCH - GPS. ▼ ▲ ☁ -22°C	MISSED APPROACH: (Do not exceed 185K until FIROs) Climb to 6340 then climbing right turn to 11000 direct FIROs and hold.
--------------------------------------	---

AWOS-3 118.525	SALT LAKE CENTER 127.7 354.125	UNICOM 122.8 (CTAF) ①
--------------------------	--	---------------------------------



ELEV 5933	TDZE 5932
-----------	-----------



CATEGORY	A	B	C	D
LP MDA		6240-1	308 (400-1)	
LNAV MDA		6240-1	308 (400-1)	
CIRCLING	6320-1 387 (400-1)	6440-1 507 (600-1)	6720-2¼ 787 (800-2¼)	7140-3 1207 (1300-3)

NW-1, 14 MAY 2026 to 11 JUN 2026

NW-1, 14 MAY 2026 to 11 JUN 2026