

WAAS CH 62842 W28A	APP CRS 284°	Rwy Ldg 5728 TDZE 5933 Apt Elev 5933
--	------------------------	---

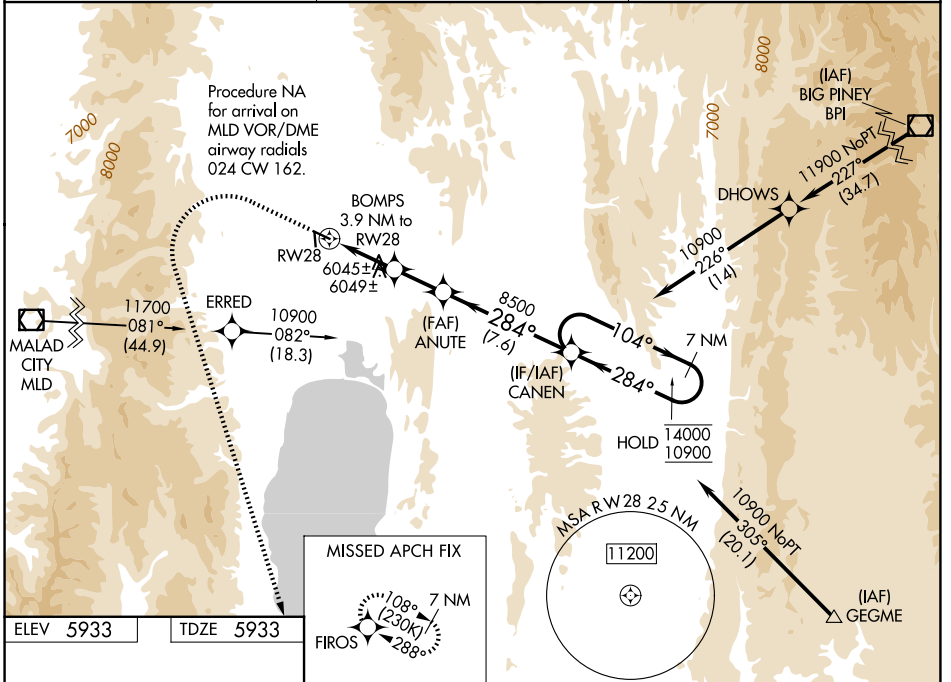
RNAV (GPS) RWY 28

BEAR LAKE COUNTY (1U7)

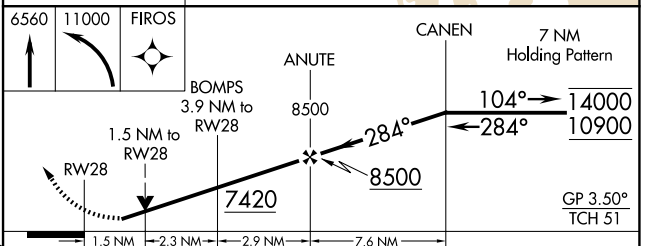
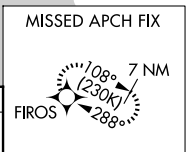
RNP APCH - GPS.
 For uncompensated Baro-VNAV systems, LNAV/VNAV NA below -26°C or above 35°C.

MISSED APPROACH: (Do not exceed 185K until FIROS)
 Climb to 6560 then climbing left turn to 11000 direct FIROS and hold.

AWOS-3 118.525	SALT LAKE CENTER 127.7 354.125	UNICOM 122.8 (CTAF)
--------------------------	--	-------------------------------



ELEV 5933	TDZE 5933
-----------	-----------



CATEGORY	A	B	C	D
LPV DA		6305-1	372 (400-1)	
LNAV/VNAV DA		6366-1¼	433 (500-1¼)	
LNAV MDA	6560-1	627 (700-1)	6560-1¾	627 (700-1¾)
CIRCLING	6560-1	627 (700-1)	6720-2¼ 787 (800-2¼)	7140-3 1207 (1300-3)

PARIS, IDAHO
 Amdt 1A 20MAR25

42°15'N-111°20'W

RNAV (GPS) RWY 28

BEAR LAKE COUNTY (1U7)

NW-1, 14 MAY 2026 to 11 JUN 2026

NW-1, 14 MAY 2026 to 11 JUN 2026