

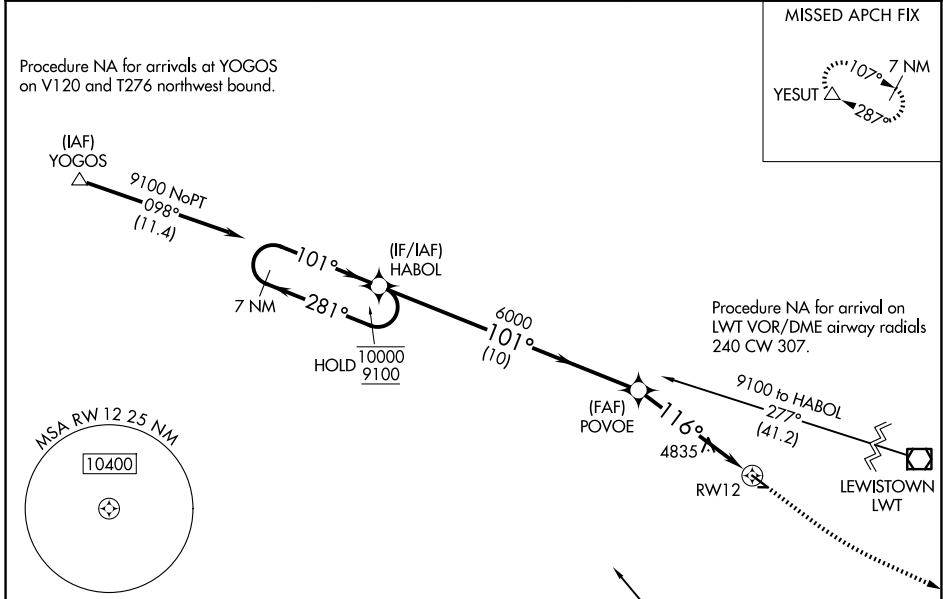
APP CRS 116°	Rwy Ldg 4200
	TDZE 4325
	Apt Elev 4328

RNAV (GPS) RWY 12

STANFORD/BIGGERSTAFF FLD (S64)

RNP APCH - GPS.		MISSED APPROACH: Climb to 5200 then climbing left turn to 8000 direct YESUT and hold.
<p>▽ Rwy 12 helicopter visibility reduction below 3/4 SM NA. Circling NA to Rwy 7 and 25. Use LWT altimeter setting; when not received, use 19MT altimeter setting and increase all MDAs 60 feet and LNAV visibility Cat A 1/4 SM, and Circling visibility Cat B 1/4 SM. Procedure NA at night.</p> <p>△ NA</p>		

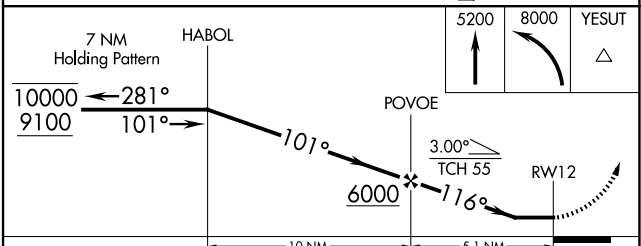
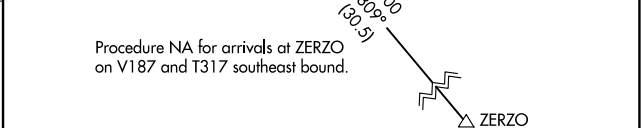
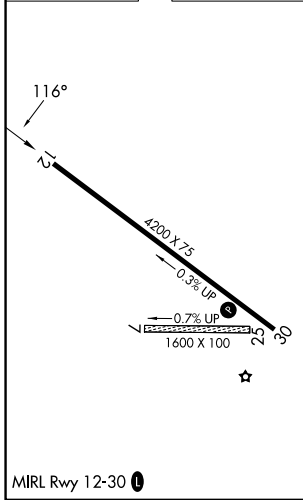
LWT ASOS 118.375	SALT LAKE CENTER 133.4 285.4	UNICOM 122.8 (CTAF) 0
----------------------------	--	---------------------------------



NW-1, 14 MAY 2026 to 11 JUN 2026

NW-1, 14 MAY 2026 to 11 JUN 2026

ELEV 4328	TDZE 4325
-----------	-----------



CATEGORY	A	B	C	D
LNAV MDA	5200-1 875 (900-1)	5200-1 1/4 875 (900-1 1/4)	5200-2 1/2	875 (900-2 1/2)
CIRCLING	5200-1 1/4 872 (900-1 1/4)	5240-1 1/4 912 (1000-1 1/4)	5600-3 1272 (1800-3)	5880-3 1552 (1600-3)