

APP CRS	Rwy Ldg	N/A
142°	TDZE	N/A
	Apt Elev	4126

RNAV (GPS)-A

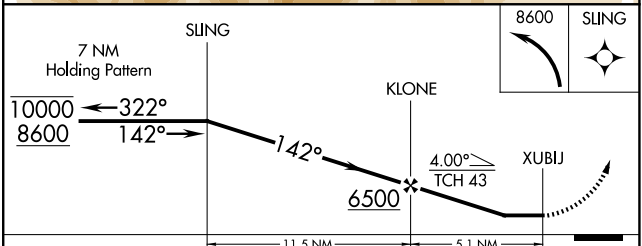
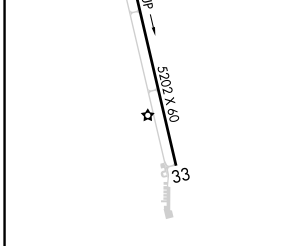
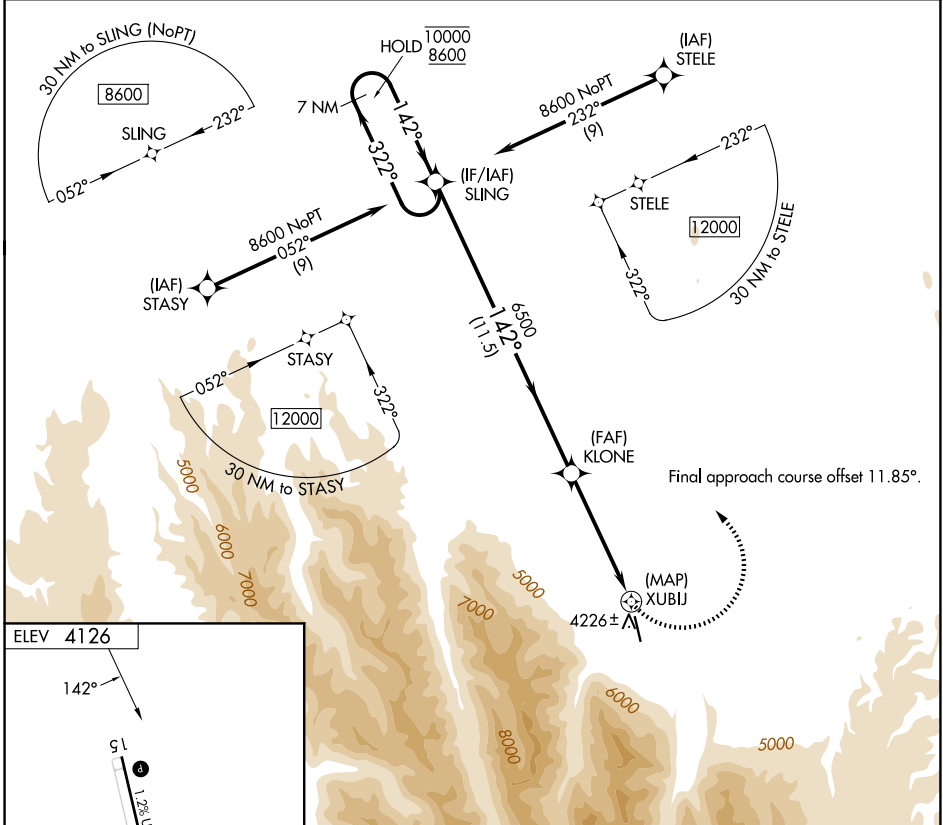
JOSEPH STATE (J5Y)

RNP APCH - GPS.

⚠ Circling NA southwest of Rwy 15-33.
 ⚠ Procedure NA at night.
 Rwy 15 and 33 helicopter visibility reduction below 1 SM NA.

MISSED APPROACH: Climbing left turn to 8600 direct SLING and hold, continue climb-in-hold to 8600.

AWOS-3P 123.775	SEATTLE CENTER 123.95 290.55	UNICOM 122.8 (CTAF) ①
---------------------------	--	---------------------------------



REIL Rwy 15 ①	MIRL Rwy 15-33 ①	CATEGORY	A	B	C	D
		CIRCLING	5000-1¼ 874 (900-1¼)	5480-1½ 1354 (1400-1½)	NA	

NW-1, 14 MAY 2026 to 11 JUN 2026

NW-1, 14 MAY 2026 to 11 JUN 2026