

WAAS CH 70439 W17A	APP CRS 170°	Rwy Ldg TDZE Apt Elev	4500 2086 2086
--	------------------------	-----------------------------	---

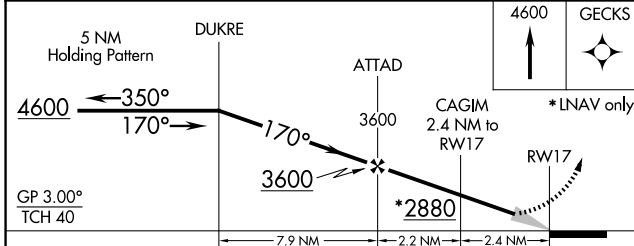
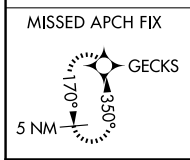
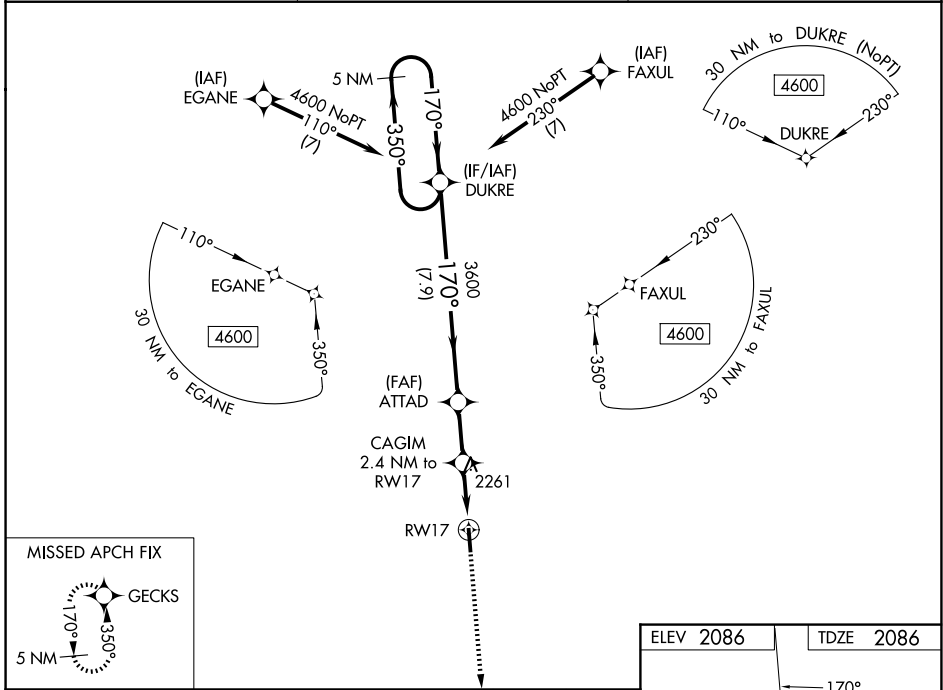
RNAV (GPS) RWY 17

COMANCHE COUNTY (3K8)

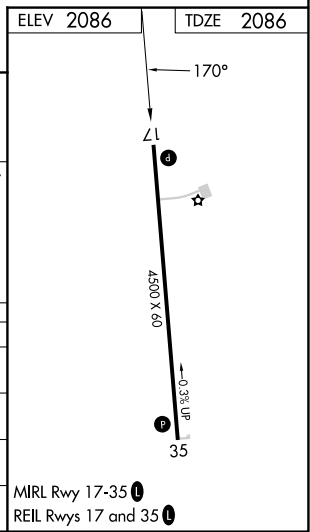
Baro-VNAV NA when using Pratt altimeter setting. DME/DME RNP-0.3 NA. When local altimeter setting not received, use Pratt altimeter setting and increase LPV and LNAV/VNAV DA to 2558; increase all MDA 120 feet; increase LPV and LNAV/VNAV all Cats visibility ¼ SM, increase LNAV Cat C visibility ¼ SM, and increase Circling Cat C visibility ½ SM.

MISSED APPROACH: Climb to 4600 direct GECKS and hold.

AWOS-3PT 118.05	KANSAS CITY CENTER 126.95 379.2	CTAF 122.9 0
---------------------------	---	------------------------



CATEGORY	A	B	C	D
LPV DA	2447-1 1/8 361 (400-1 1/8)			NA
LNAV/VNAV DA	2447-1 1/8 361 (400-1 1/8)			NA
LNAV MDA	2640-1	554 (600-1)	2640-1 1/8 554 (600-1 1/8)	NA
CIRCLING	2640-1	554 (600-1)	2940-2 1/2 854 (900-2 1/2)	NA



NC-2, 14 MAY 2026 to 11 JUN 2026

NC-2, 14 MAY 2026 to 11 JUN 2026