

RNAV (GPS) RWY 35

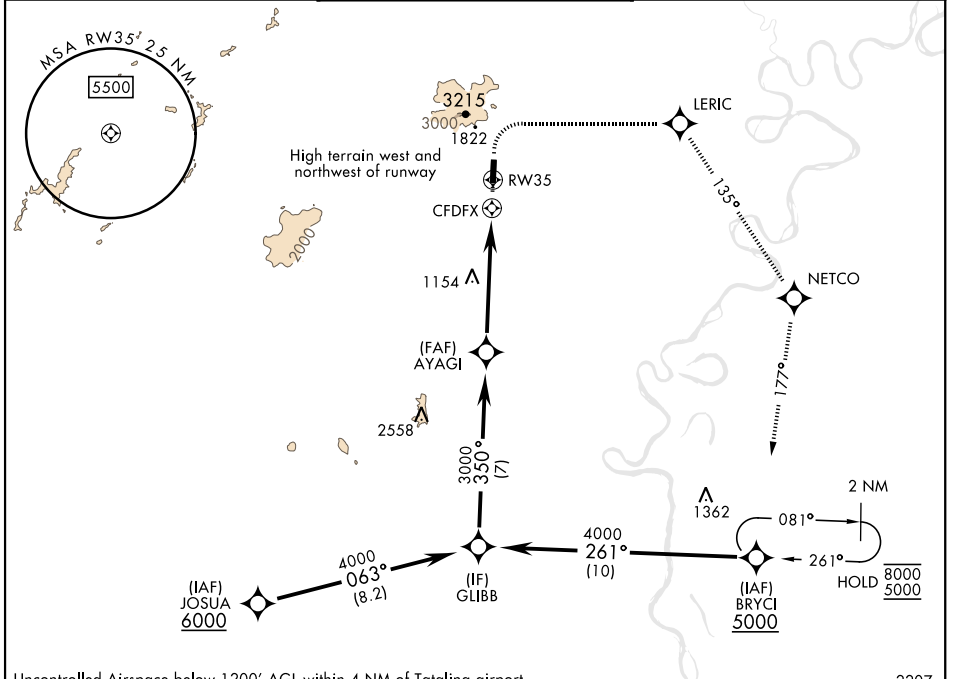
APCH CRS	Rwy ldg	3820
350°	TDZE	925
	Arprt Elev	933

[USAF]

TATALINA LRSS (PATL)

RNP APCH	MISSED APPROACH: (Do not exceed 165 KIAS until initial turn completion). Climb to 1500 then climbing right turn to 5000 direct LERIC, track 135° to NETCO, track 177° to BRYCI and hold.
----------	--

KENAI RADIO 122.3	UNICOM 126.2 (CTAF) 364.2	AWOS-3
----------------------	------------------------------	--------



AK, 14 MAY 2026 to 09 JUL 2026

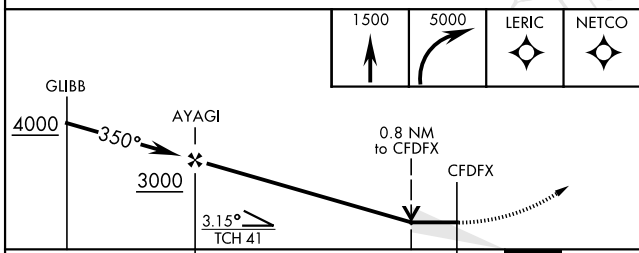
AK, 14 MAY 2026 to 09 JUL 2026

Uncontrolled Airspace below 1200' AGL within 4 NM of Tatalina airport 2207 A

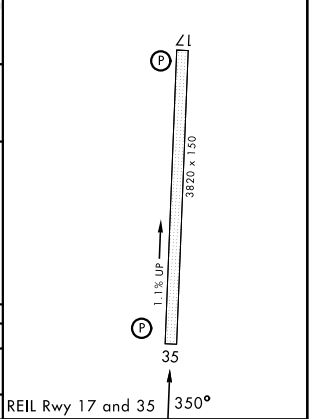
NOT FOR CIVIL USE EMERG SAFE ALT 100 NM 12,000

ELEV 933	TDZE 925
----------	----------

MILITARY CERTIFIED AIRCREWS OR AUTHORIZED CONTRACT AIRCRAFT ONLY



CATEGORY	A	B	C	D
LNVA MDA	1500-1¼	575 (600-1¼)	1520-1¾	NOT AUTHORIZED
CIRCLING	NOT AUTHORIZED			



TAKOTNA, ALASKA 62° 54'N-155° 59'W TATALINA LRSS (PATL)

Amdt 3 30NOV23

RNAV (GPS) RWY 35