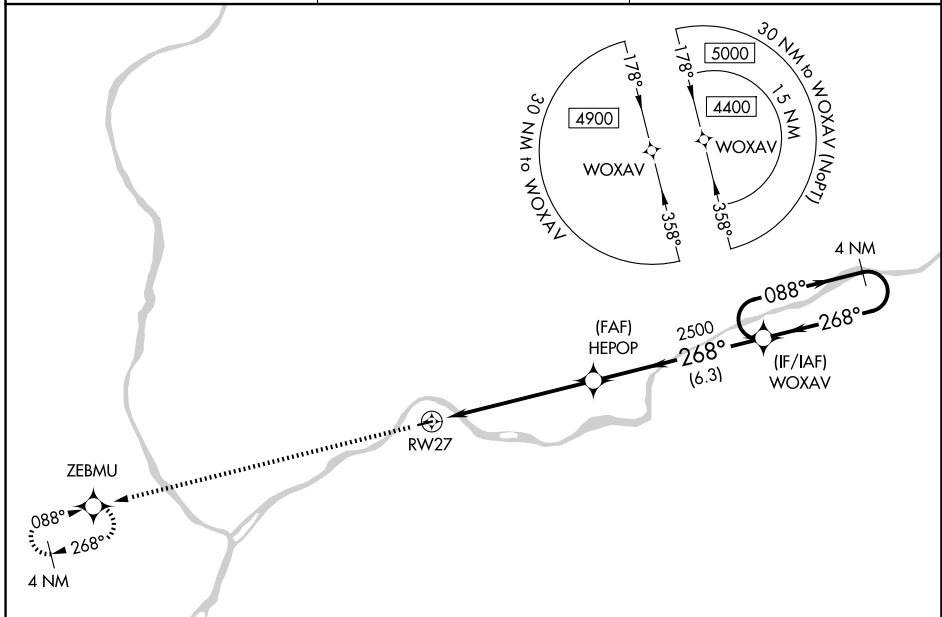


APP CRS 268°	Rwy Ldg TDZE Apt Elev	3000 559 559
------------------------	-----------------------------	---

RNAV (GPS) RWY 27

DANVILLE (8N8)

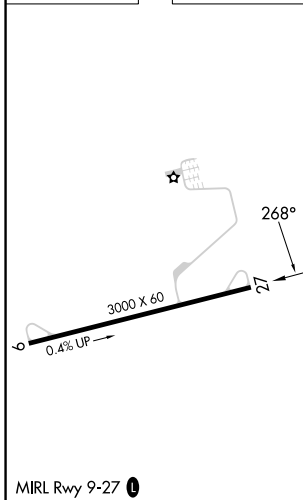
RNP APCH - GPS.		MISSED APPROACH: Climb to 4400 direct ZEBMU and hold, continue climb-in-hold 4400.
▼	Use Williamsport altimeter setting; when not received, procedure NA.	
▲	NA	Procedure NA at night. Rwy 27 helicopter visibility reduction below 1 SM NA.
IPT ASOS 125.225	WILKES-BARRE APP CON 126.3 256.7	UNICOM 122.8 (CTAF)



NE-4, 14 MAY 2026 to 11 JUN 2026

NE-4, 14 MAY 2026 to 11 JUN 2026

ELEV 559	TDZE 559
----------	----------



4400	ZEBMU	Visual Segment - Obstacles.	4 NM Holding Pattern
RWY 27		HEPOP 2500	WOXAV 4400
6 NM		6.3 NM	
CATEGORY	A	B	C D
LNAV MDA	1540-1¼ 981 (1000-1¼)	1540-1½ 981 (1000-1½)	NA