

APP CRS	Rwy Ldg	<b>5000</b>
<b>011°</b>	TDZE	<b>65</b>
	Apt Elev	<b>65</b>

# RNAV (GPS) RWY 1

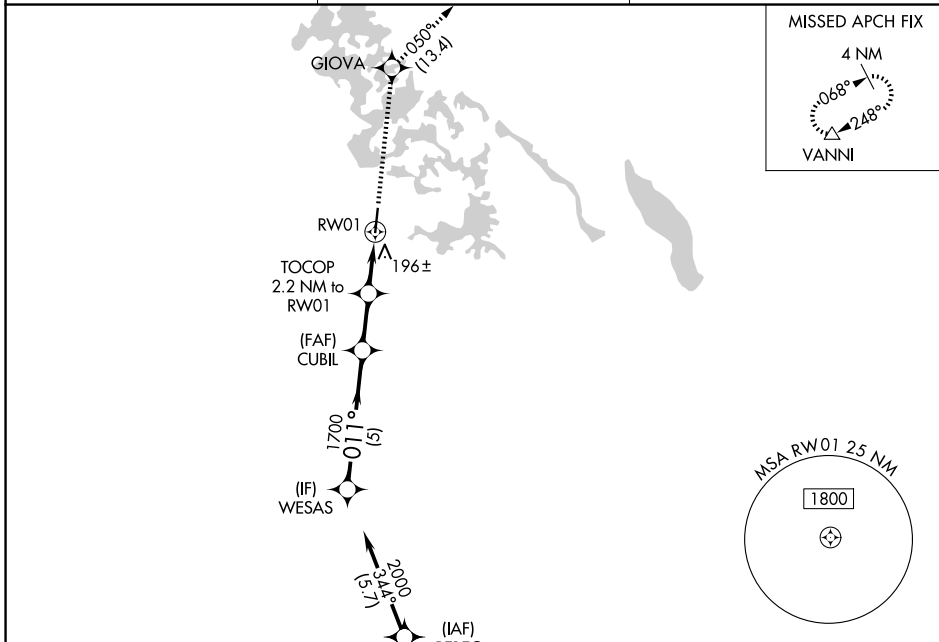
INVERNESS (INF)

RNP APCH - GPS.

**▼** Rwy 1 helicopter visibility reduction below 1 SM NA. Procedure NA at night. When local altimeter setting not received, use OCF altimeter setting and increase all MDAs 60 feet and LNAV visibility Cat C 1/8 SM, and Circling visibility Cat C 1/4 SM.

**MISSED APPROACH:** Climb to 2000 direct GIOVA and on track 050° to VANNI and hold.

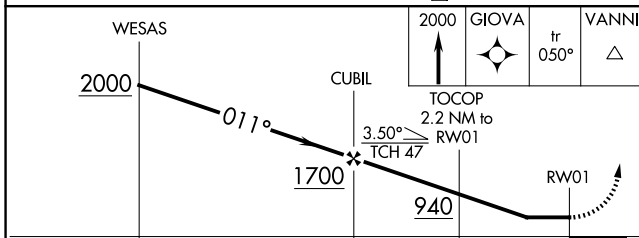
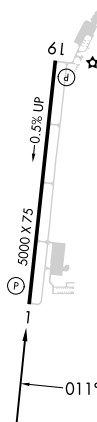
AWOS-3 <b>119.975</b>	JACKSONVILLE APP CON <b>118.6 251.15</b>	UNICOM <b>122.725 (CTAF) 0</b>
--------------------------	---	-----------------------------------



Procedure NA for arrivals at DADES on V581 southbound.

ELEV 65	TDZE 65
---------	---------

MIRL Rwy 1-19 **0**  
REIL Rwys 1 and 19 **0**



CATEGORY	A	B	C	D
LNAV MDA	500-1	435 (500-1)	500-1 1/4 435 (500-1 1/4)	NA
CIRCLING	660-1	595 (600-1)	660-1 1/2 595 (600-1 1/2)	NA

SE-3, 14 MAY 2026 to 11 JUN 2026

SE-3, 14 MAY 2026 to 11 JUN 2026