

APP CRS	Rwy Ldg	3000
001°	TDZE	12
	Apt Elev	12

RNAV (GPS) RWY 3

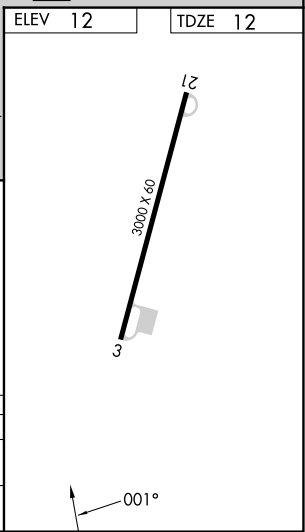
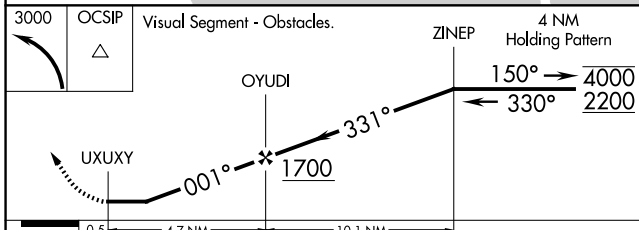
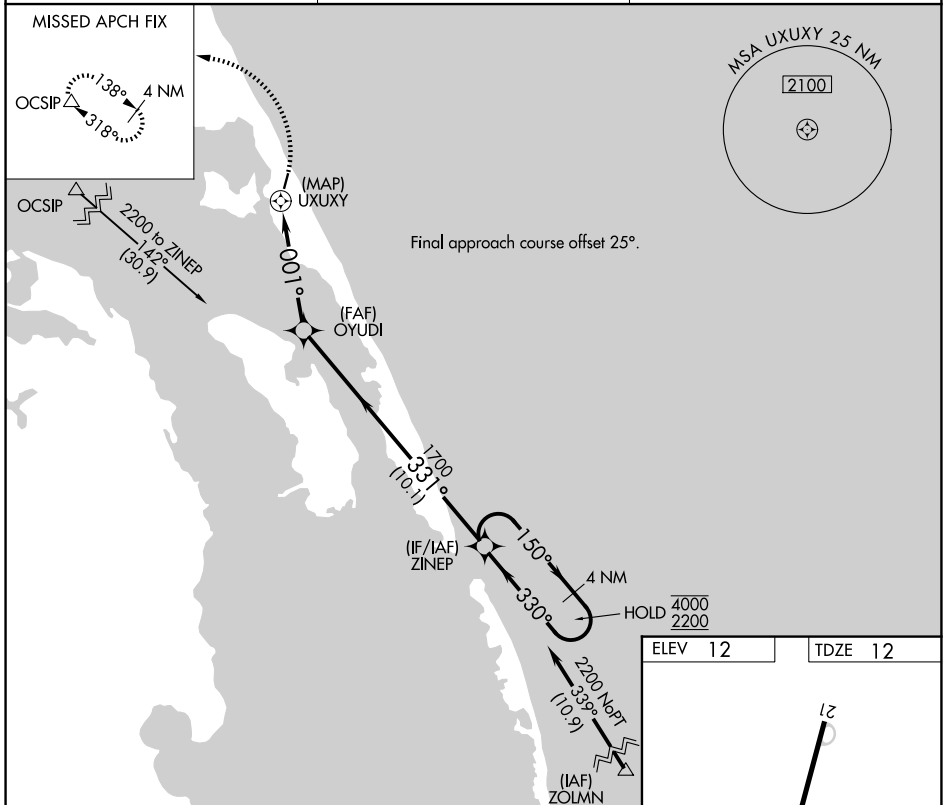
FIRST FLIGHT (F'FA)

RNP APCH - GPS.

- Procedure NA at night.
- Rwy 3 helicopter visibility reduction below 1 SM NA.

MISSED APPROACH: Climbing left turn to 3000 direct OCSIP and hold.

AWOS-3 118.075	CHERRY POINT APP CON 124.725 350.35	CTAF 122.9
--------------------------	---	----------------------



CATEGORY	A	B	C	D
LNAV MDA	480-1	468 (500-1)		NA
CIRCLING	520-1 508 (600-1)	540-1 528 (600-1)		NA

SE-2, 14 MAY 2026 to 11 JUN 2026

SE-2, 14 MAY 2026 to 11 JUN 2026