

APP CRS	Rwy Idg	3997
281°	TDZE	351
	Apt Elev	351

RNAV (GPS) RWY 28

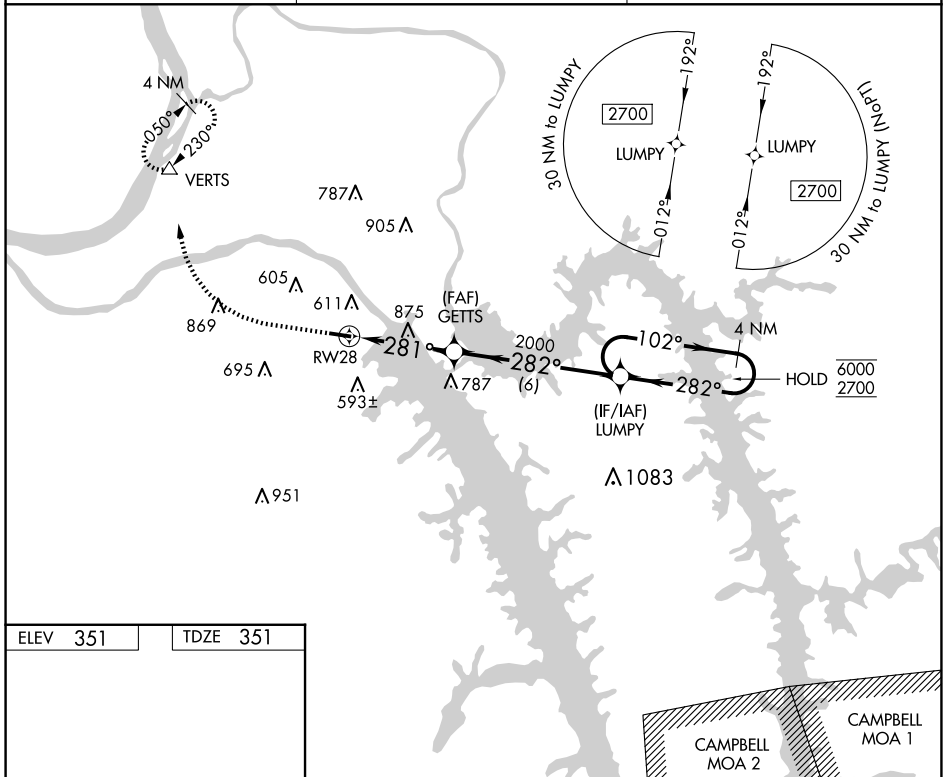
KENTUCKY DAM STATE PARK (M34)

RNP APCH - GPS.

▽ Circling NA south of Rwy 10-28. Procedure NA at night. Rwy 28 helicopter visibility reduction below 1 SM NA. Use Paducah altimeter setting. Avoid Campbell MOA/A-371 when active.

MISSED APPROACH: Climb to 1800 then climbing right turn to 2700 direct VERTS and hold.

PAH ASOS 118.375	MEMPHIS CENTER 133.65 292.15	UNICOM 123.0 (CTAF) 0
----------------------------	--	---------------------------------



ELEV 351	TDZE 351
----------	----------

MIRL Rwy 10-28 **0**
REIL Rws 10 and 28 **0**

1800 2700 VERTS **△** VGSI and descent angles not coincident (VGSI Angle 4.00/TCH 34).

4 NM Holding Pattern

CATEGORY	A	B	C	D
LNAV MDA	1200-1 849 (900-1)	1200-1¼ 849 (900-1¼)	NA	
CIRCLING	1200-1¼	849 (900-1¼)	NA	

SE-1, 14 MAY 2026 to 11 JUN 2026

SE-1, 14 MAY 2026 to 11 JUN 2026